

ErgoRack

For Enclosed Utility

PRIME DESIGNTM

A Safe Fleet Brand



Maximize the safety and carrying capacity of your Enclosed Utility with an ErgoRack.



Easy to use

Deploys with only 2 fingers.



Improve productivity

Deploy or stow in less than 20 seconds.



Enhance safety

Eliminates slip and fall hazards from climbing on bumper or tire.



Full control

Control ladder deployment with adjustable hydraulic cylinder

SAFE  FLEET

Driving Safety ForwardTM

ErgoRack

For Enclosed Utility

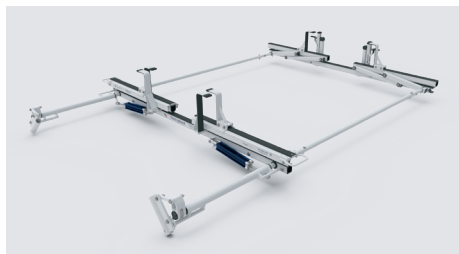
PRIME DESIGN™

A Safe Fleet Brand



HBR-E-UM3-84-M

Single Horizontal Rotation with Slide



HRR-E-UM3-84-M

Dual Horizontal Rotation with Slides



HRR3-E-UM3-84-M

Dual Horizontal Rotation with Slides and 3rd crossbar

Model	Body Width	Ground to Roof Height	Street Side Feature	Curb Side Feature	Crossbar Spacing	Rack Weight
HBR-E-UM3-68-M	64 -70"	7 ft or Higher	End Stop	Rotation w/ Slide	5-8'	89 lbs.
HRR-E-UM3-68-M	64 -70"	7 ft or Higher	Rotation w/ Slide	Rotation w/ Slide	5-8'	144 lbs.
HRR3-E-UM3-68-M	64 -70"	7 ft or Higher	Rotation w/ Slide	Rotation w/ Slide	5-8'	162 lbs.
HBR-E-UM3-72-M	68 -74"	7 ft or Higher	End Stop	Rotation w/ Slide	5-8'	90 lbs.
HRR-E-UM3-72-M	68 -74"	7 ft or Higher	Rotation w/ Slide	Rotation w/ Slide	5-8'	145 lbs.
HRR3-E-UM3-72-M	68 -74"	7 ft or Higher	Rotation w/ Slide	Rotation w/ Slide	5-8'	161 lbs.
HBR-E-UM3-78-M	74 -80"	7 ft or Higher	End Stop	Rotation w/ Slide	5-8'	91 lbs.
HRR-E-UM3-78-M	74 -80"	7 ft or Higher	Rotation w/ Slide	Rotation w/ Slide	5-8'	146 lbs.
HRR3-E-UM3-78-M	74 -80"	7 ft or Higher	Rotation w/ Slide	Rotation w/ Slide	5-8'	164 lbs.
HBR-E-UM3-84-M	80 -86"	7 ft or Higher	End Stop	Rotation w/ Slide	5-8'	92 lbs.
HRR-E-UM3-84-M	80 -86"	7 ft or Higher	Rotation w/ Slide	Rotation w/ Slide	5-8'	147 lbs.
HRR3-E-UM3-84-M	80 -86"	7 ft or Higher	Rotation w/ Slide	Rotation w/ Slide	5-8'	162 lbs.
HBR-E-UM3-90-M	86 -92"	7 ft or Higher	End Stop	Rotation w/ Slide	5-8'	93 lbs.
HRR-E-UM3-90-M	86 -92"	7 ft or Higher	Rotation w/ Slide	Rotation w/ Slide	5-8'	148 lbs.
HRR3-E-UM3-90-M	86 -92"	7 ft or Higher	Rotation w/ Slide	Rotation w/ Slide	5-8'	164 lbs.
HBR-E-UM3-99-M	96 -102"	7 ft or Higher	End Stop	Rotation w/ Slide	5-8'	94 lbs.
HRR-E-UM3-99-M	96 -102"	7 ft or Higher	Rotation w/ Slide	Rotation w/ Slide	5-8'	149 lbs.
HRR3-E-UM3-99-M	96 -102"	7 ft or Higher	Rotation w/ Slide	Rotation w/ Slide	5-8'	168 lbs.

Notes:

For rotation style ladder racks, crossbars can be spaced at 1-foot increments from 5 feet up to 8 feet.

Review the crossbar spacing and ladder size guide below.

For step ladders longer than 10 feet, an optional extended rear upper with slide is recommended.[†]

Check the vehicle manufacturer's recommendation for the roof capacity weight limit.

Crossbar Spacing and Ladder Size Guide

Crossbar Spacing	Step Ladder Size	Extension Ladder Size
4 ft Spacing	6 – 8 ft.	16 – 20 ft.
5 ft Spacing	8 – 10 ft.	16 – 24 ft.
6 ft Spacing	8 – 12 ft.†	16 – 28 ft.
7 ft Spacing**	10 – 12 ft.†	20 – 32 ft.
8 ft Spacing**	10 – 12 ft.†	20 – 36 ft.

†12 ft. step ladders may require an extended upper add-on component.

ML-7.2-4065 / Rev B / 7-27-2020

Copyright ©2020 Safe Fleet and its subsidiaries. All rights reserved. No part of this publication may be reproduced by any means without written permission from Safe Fleet. The information in this publication is believed to be accurate. However, Safe Fleet does not make any representation or warranty to that effect and does not assume responsibility for any consequences resulting from use of such information. Revisions or new editions of the publication may be issued (or not issued) in our discretion to incorporate such changes.

1.877.463.7225
safefleet.net

