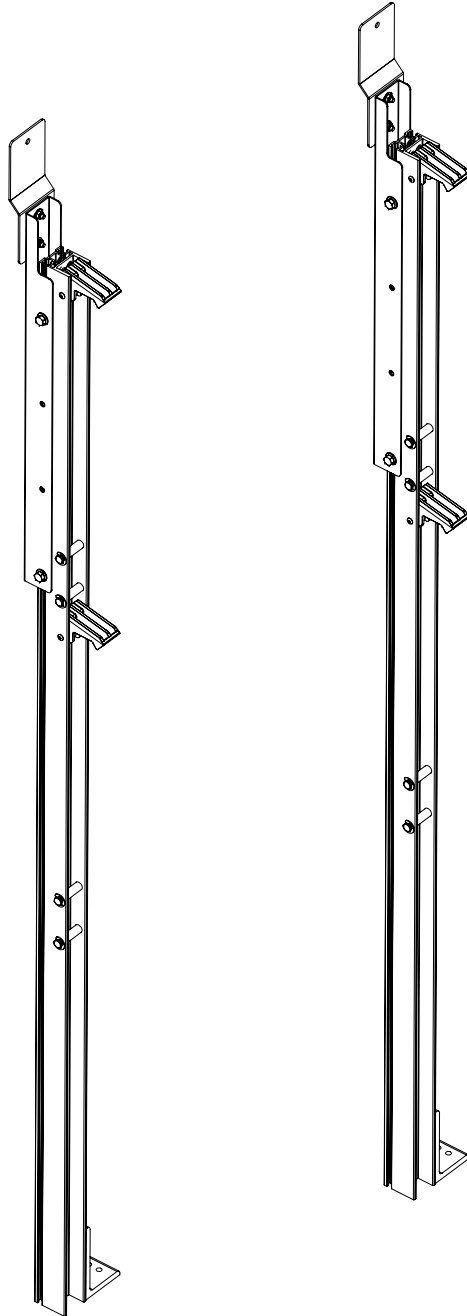


PRIME DESIGN™

A Safe Fleet Brand



Prime Design - FoldPro Shelving Upright Assembly

Page 2	Packaging Contents
Page 3-4	Assembly Instructions

PRIME DESIGN, A SAFE FLEET BRAND
Address: 580 Opperman Drive, Eagan, MN 55123 • Toll Free: 1.8.PRIME.RACK
Fax: 651-552-1799 • Email: info@primedesign.net • Website: www.primedesign.net

FPU-3260

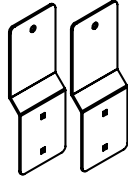
CONTENTS OVERVIEW

1—FoldPro Shelving Upright (Qty 2)

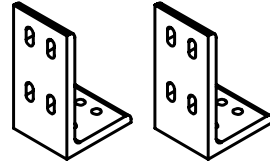


* Check your vehicle layout configuration and OEM for correct product

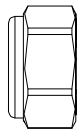
2—AV-1291 (Qty 2)



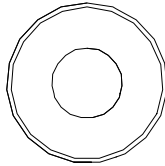
3—AV-1019 (Qty 2)



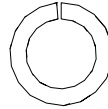
4—HKT-0216 (Qty 1)



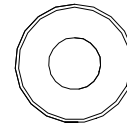
Locknut (1X)



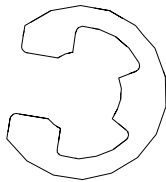
5/16 Flat Washer (2X)



Lock Washer (1X)



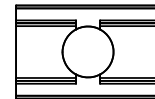
1/4 Flat Washer (2X)



Retain Ring (16X)



Hinge Pin (8X)



Upright Nut Bracket (4X)

ASSEMBLY REQUIREMENTS

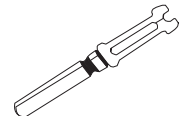


INSTALLER NOTE: *It is important to correctly follow these assembly instructions. These instructions for assembly are provided by the manufacturer at time of Cantilever Shelving delivery, and reflect the technical specifications applicable at the time of writing.*

- These instructions are subject to change if the manufacturer revises the parts and/or production of the subsystems and accessories used in the brand’s vehicles. Following the instructions for assembly will ensure proper installation of the product. The manufacturer will not be held liable if these instructions are not followed.
- The addition of parts and/or components not original to this Cantilever Shelving are discouraged. Use only OEM supplied parts.
- Consultation of the OEM vehicle may be required during assembly to avoid vehicle damage. Ensure bolt locations will not damage any critical parts of the vehicle—i.e. gas tank, wiring harnesses, or hoses—before drilling.

RECOMMENDED TOOLS

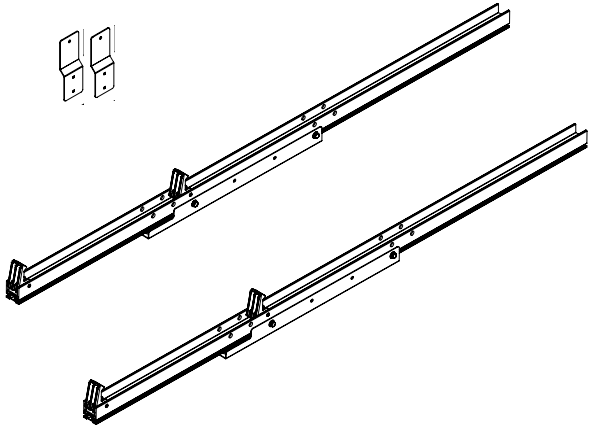
“E-Style” Retaining Ring Applicator Tool



SHELVING ASSEMBLY SEQUENCE

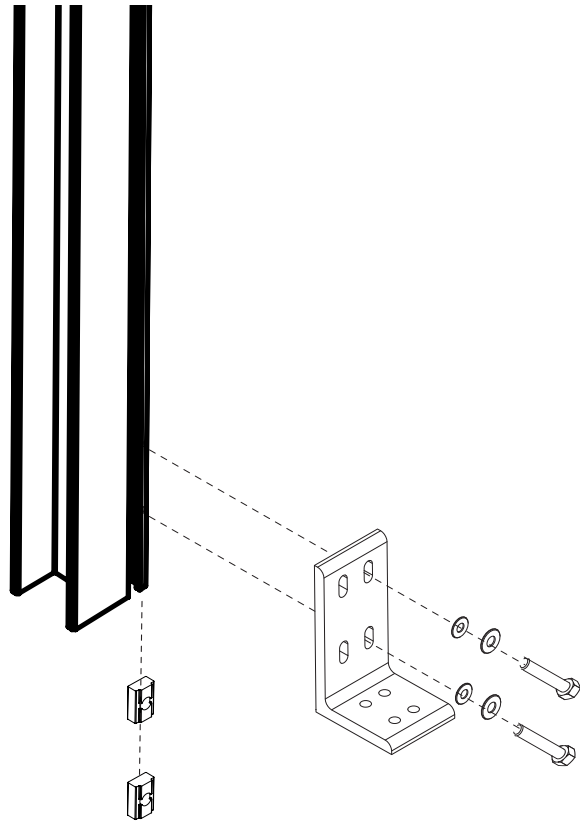
0 Shelving comes packaged in pairs. For the remainder of the manual unless otherwise noted, the instructions will apply to all supports.

NOTE: For truck bodies that have an E Track or other equipment installed onto the interior walls, a spacer will need to be created in order to align the uprights and shelving correctly.

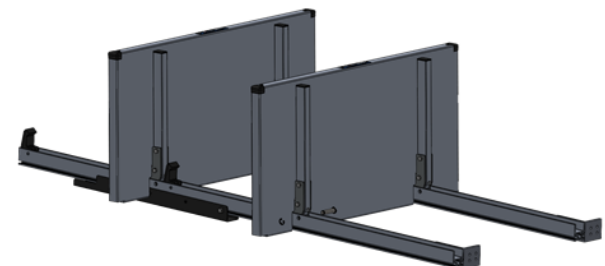
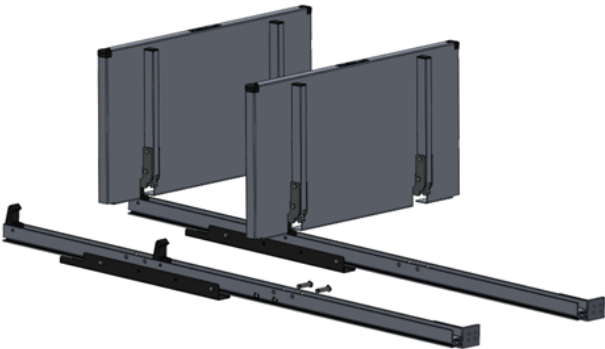


*Product shown in views is for illustrative purposes, and may vary from your configuration. All Assembly Steps remain the same throughout this Manual.

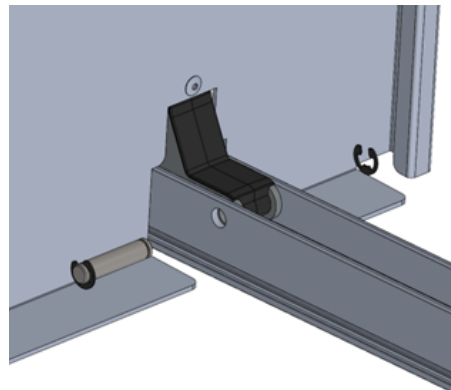
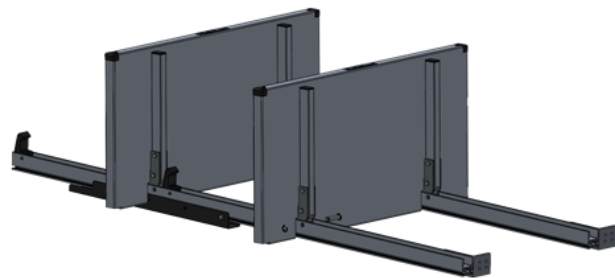
1 Insert small nut bracket into side upright channel and mount bottom floor bracket using provided hardware.



2 Set uprights horizontally on table or sawhorse. Set both shelves vertically in place and insert into uprights.

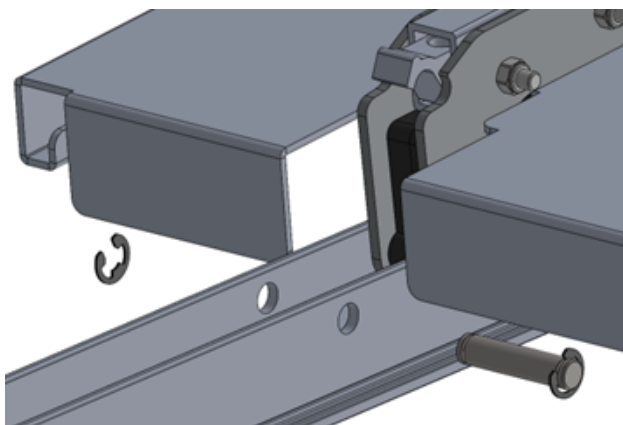


3 Align shelf pivot with top hole in upright. Insert pin with attached E-clip and secure second E-clip onto pin. Repeat for all pivot locations.



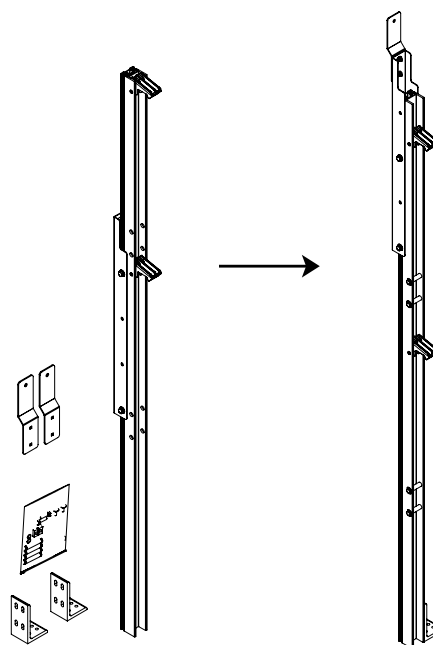
4

With both shelves closed install bottom pin as shown below.



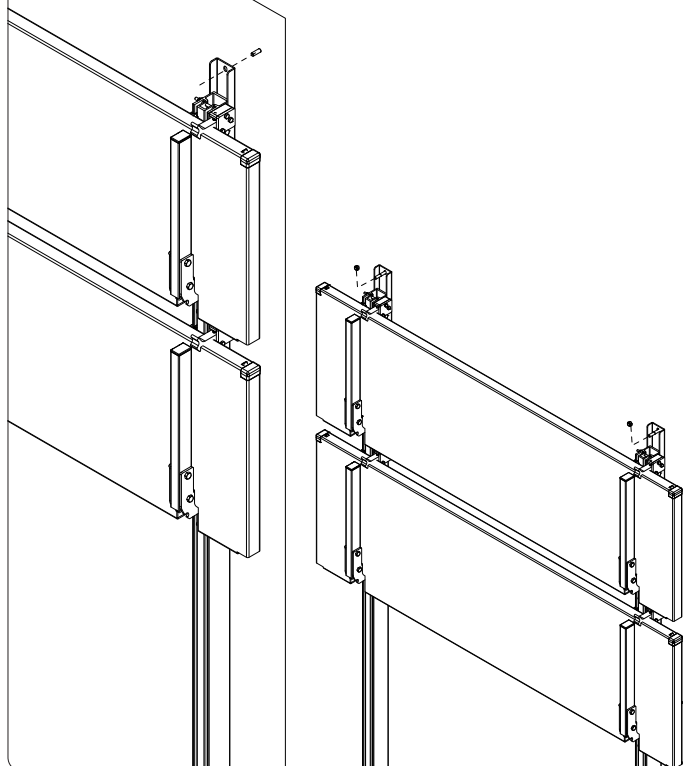
5

According to body height and attachment location, adjust and install required mounting hardware on upright.



5

Attach to body utilizing top wall to roof extrusion as shown below using OEM hardware.



6

Upright feet are customizable for drilling locations and positioning. Install hardware according to your vehicle OEM.

