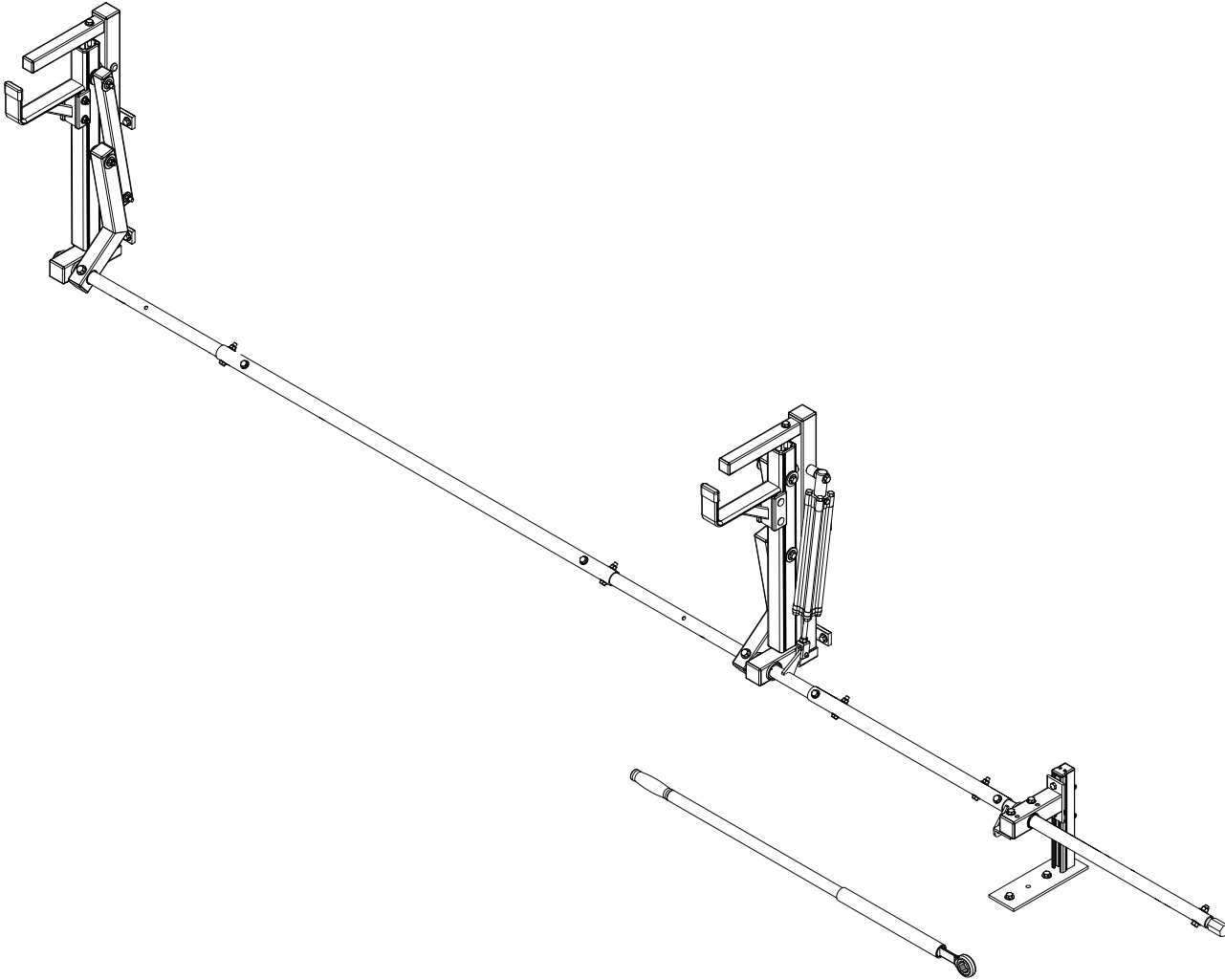


# PRIME DESIGN™

A Safe Fleet Brand

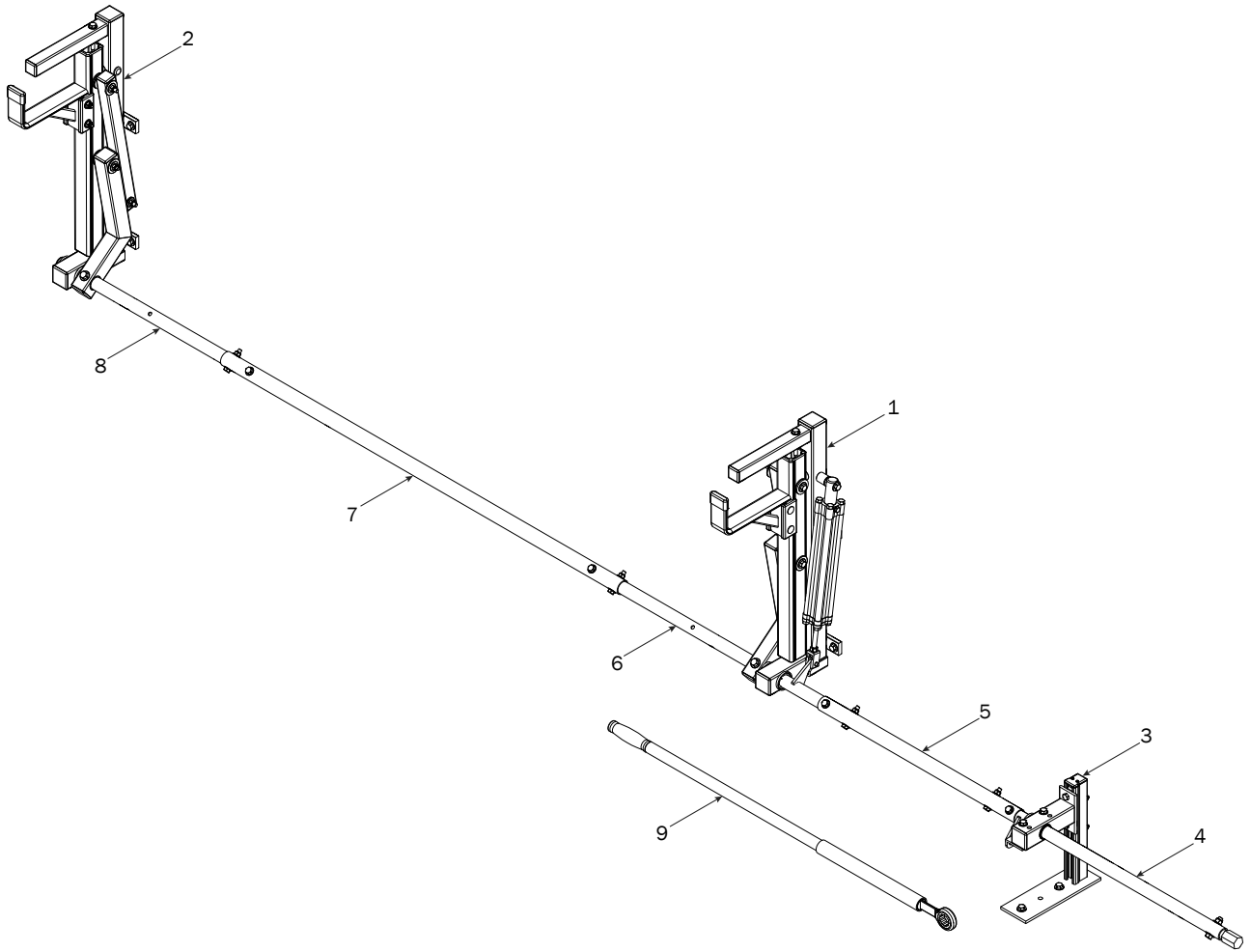


PRIME DESIGN, A SAFE FLEET BRAND

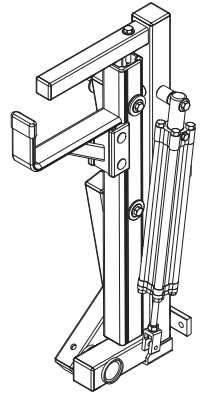
Address: 580 Opperman Drive, Eagan, MN 55123 • Toll Free: 1.8.PRIME.RACK

Fax: 651-552-1799 • Email: [info@primedesign.net](mailto:info@primedesign.net) • Website: [www.primedesign.net](http://www.primedesign.net)

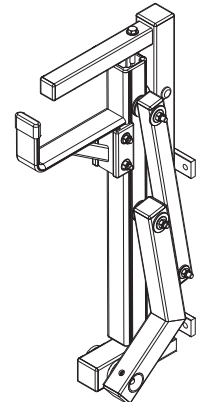
*CONTENTS OVERVIEW*



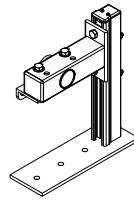
1—Rear Rotation Assembly..... (Qty 1)



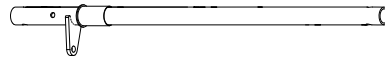
2—Front Rotation Assembly..... (Qty 1)



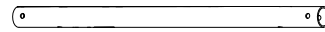
3—Vertical Drive Shaft Support..... (Qty 1)  
Utility, Left Hand, Reversible



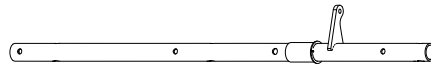
4—Drive Shaft Rear Extension..... (Qty 1)  
Hex Drive, 28.50"



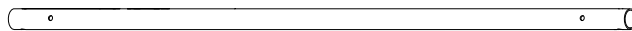
5—Connecting Bar..... (Qty 1)  
24.00"



6—Drive Shaft..... (Qty 1)  
Extended Rear, UV, LEFT Hand, 32.00"



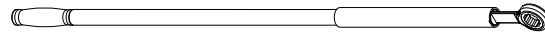
7—Connecting Bar..... (Qty 1)  
48.00"



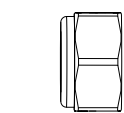
8—Front Drive Shaft..... (Qty 1)  
B Version, 35.75"



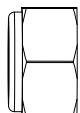
9—Ratcheting Handle Assembly..... (Qty 1)  
41.00"L



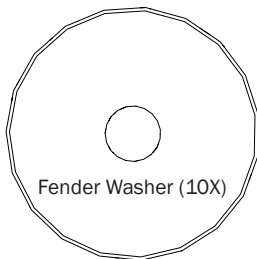
HKT-8119-Hardware Kit



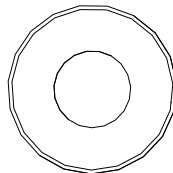
M8 Lock Nut (18X)



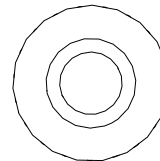
3/8" Lock Nut (3X)



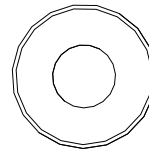
Fender Washer (10X)



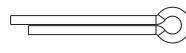
3/8" Flat Washer (6X)



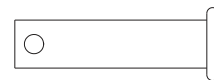
5/16" Seal Washer (10X)



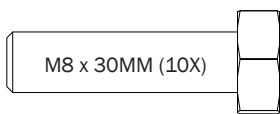
5/16" Flat Washer (16X)



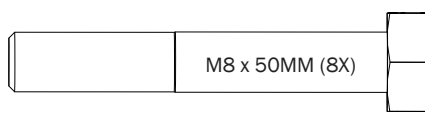
Cotter Pin (1X)



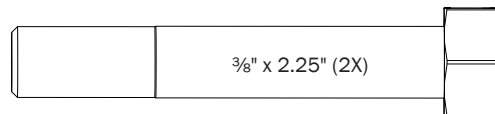
Clevis Pin (1X)



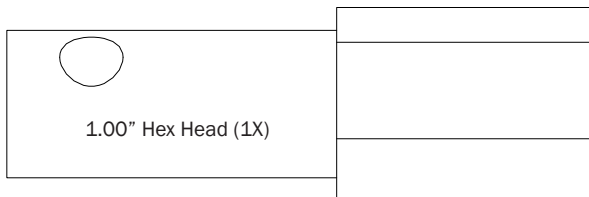
M8 x 30MM (10X)



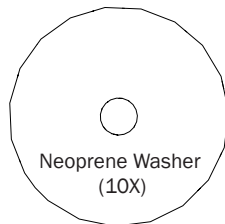
M8 x 50MM (8X)



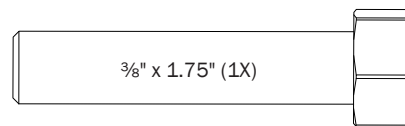
3/8" x 2.25" (2X)



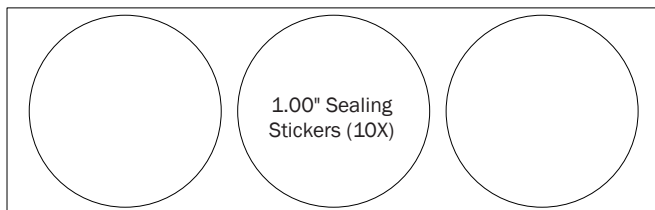
1.00" Hex Head (1X)



Neoprene Washer (10X)



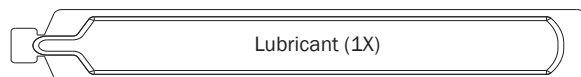
3/8" x 1.75" (1X)



1.00" Sealing Stickers (10X)

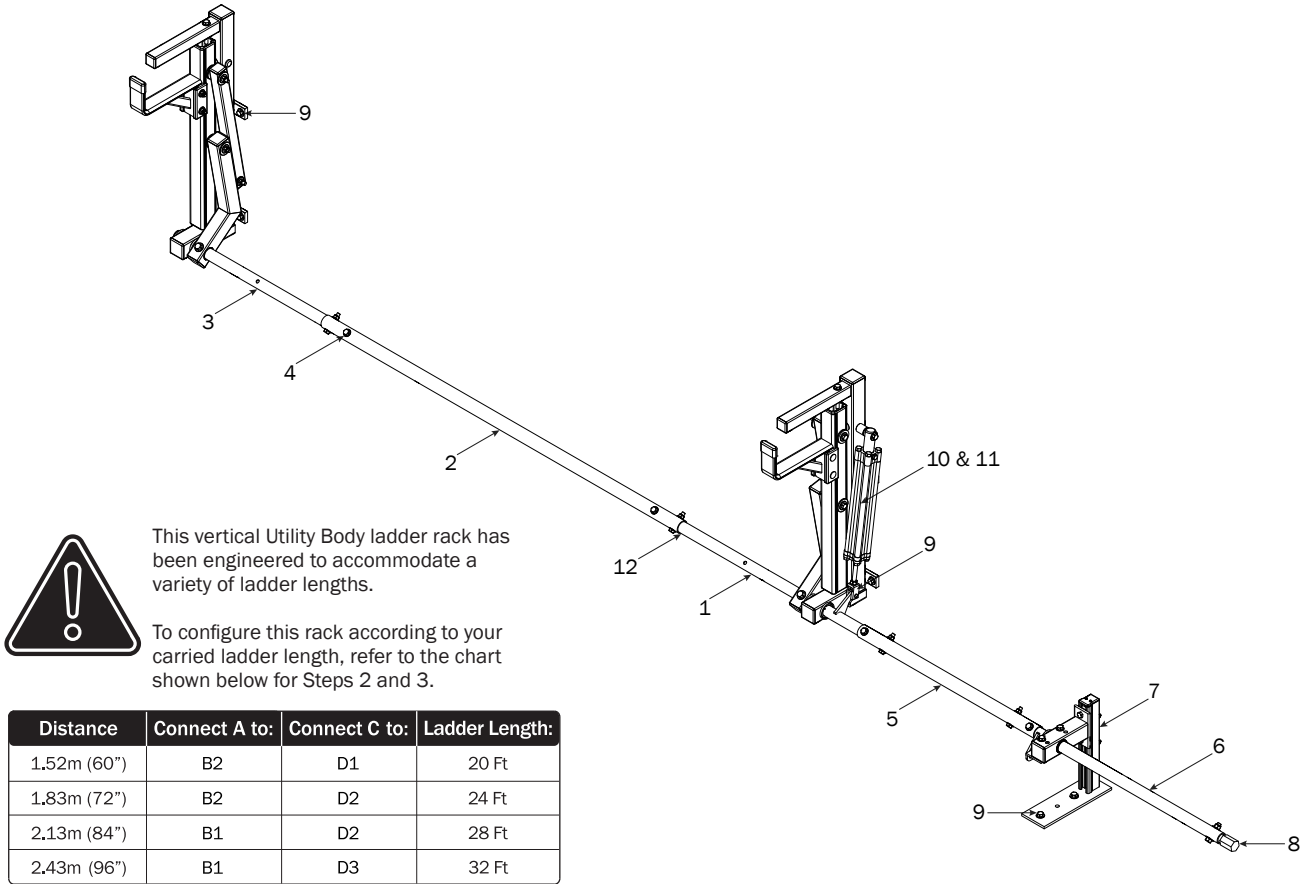


Anti-Seize (1X)

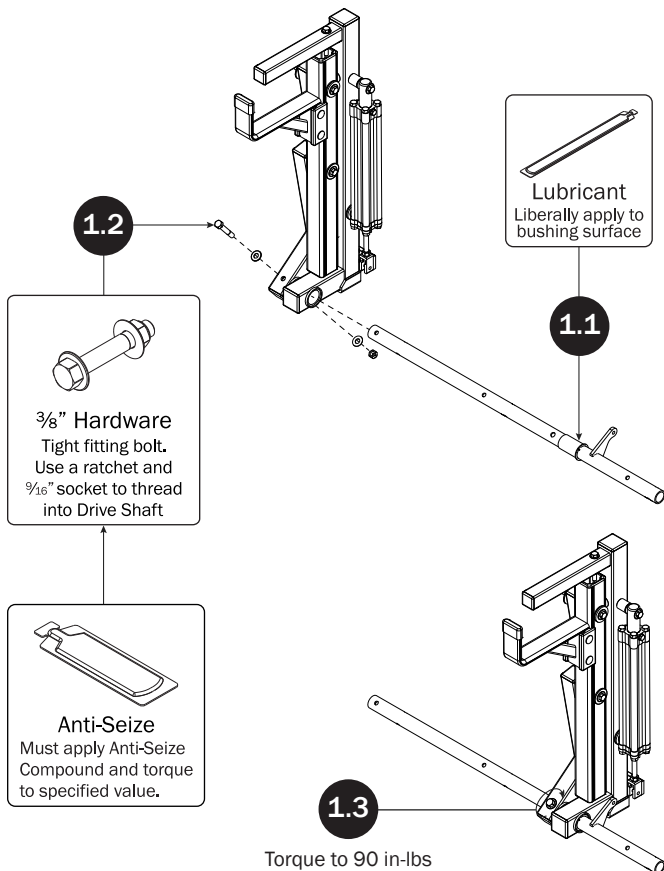


Lubricant (1X)

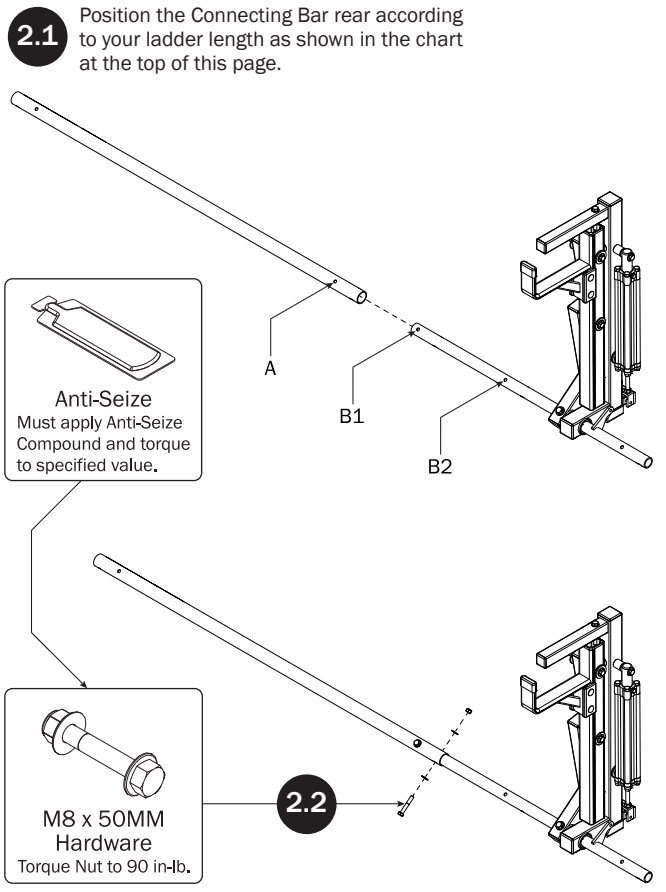
### LEFT ROTATION ASSEMBLY SEQUENCE



### REAR DRIVE SHAFT

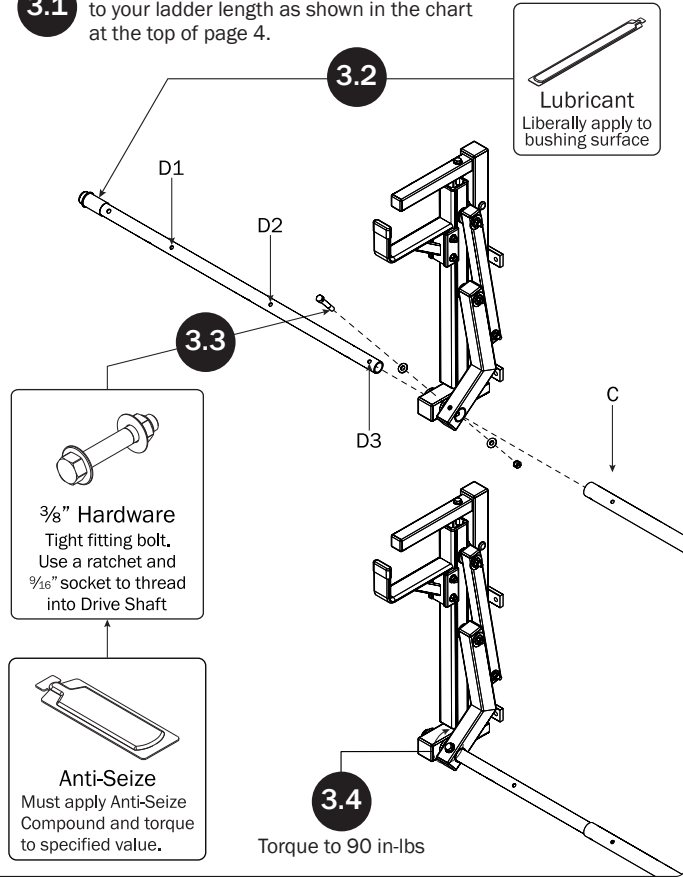


### CONNECTING BAR—48"

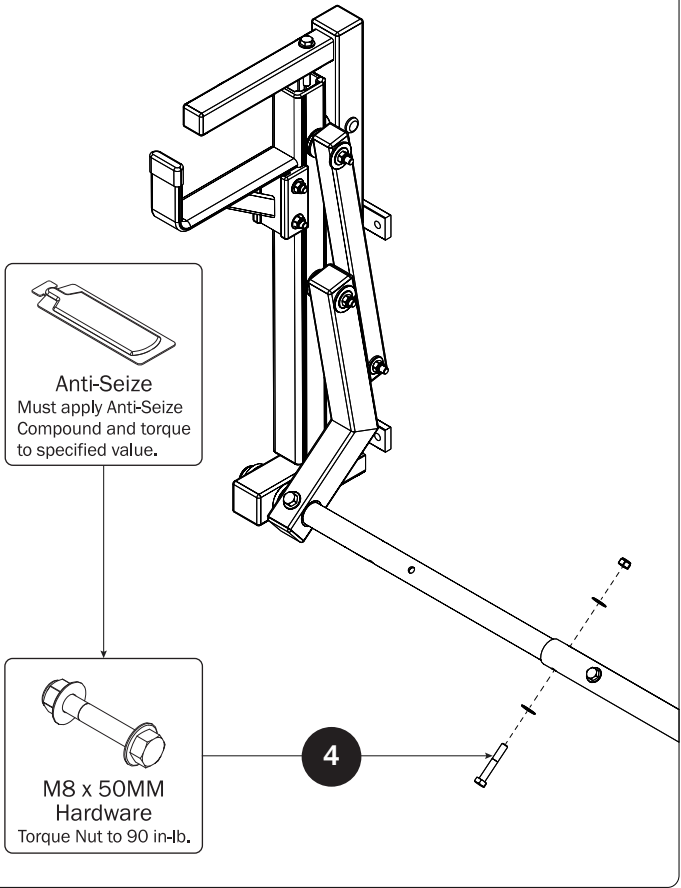


### FRONT DRIVE SHAFT

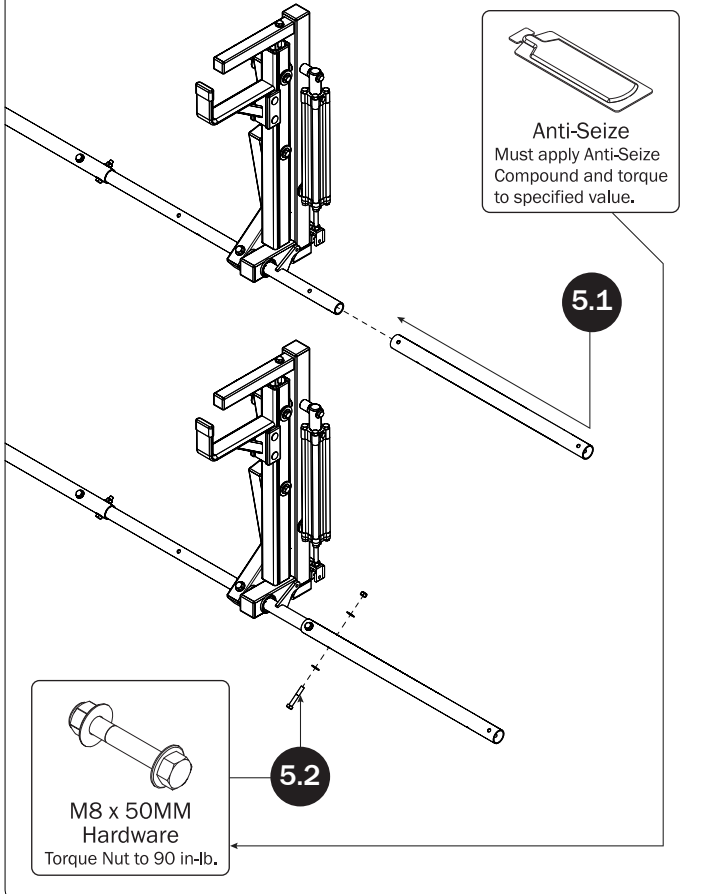
**3.1** Position the Connecting Bar front according to your ladder length as shown in the chart at the top of page 4.



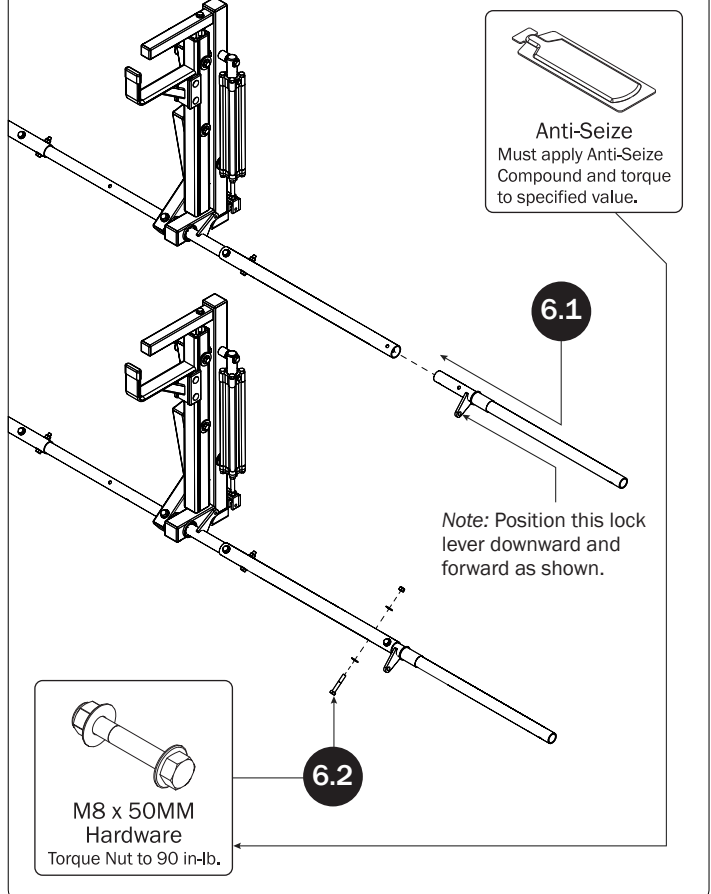
### CONNECTING BAR FASTENERS



### CONNECTING BAR-24"

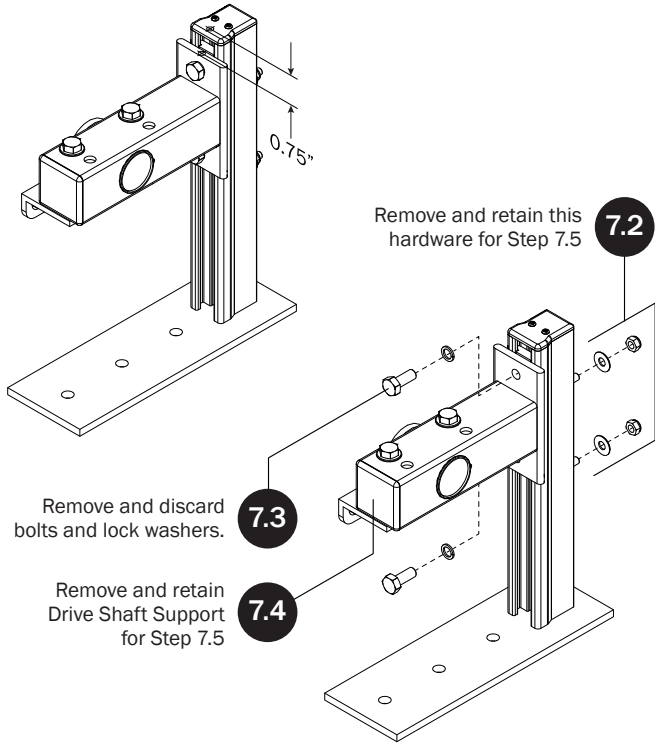


### HEX DRIVE SHAFT REAR EXTENSION

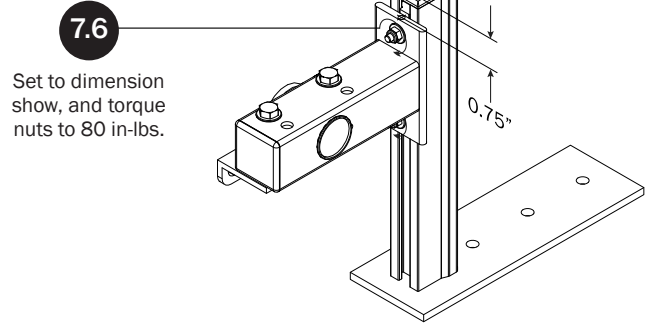
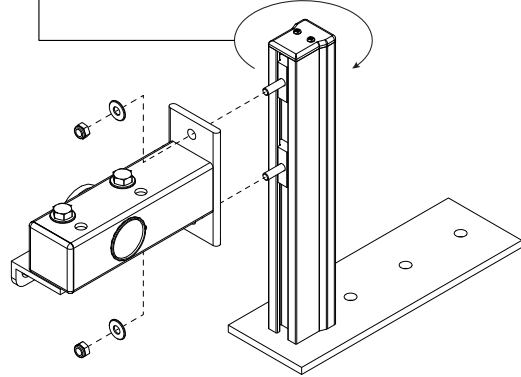


**HEX DRIVE SHAFT  
REAR EXTENSION SUPPORT**

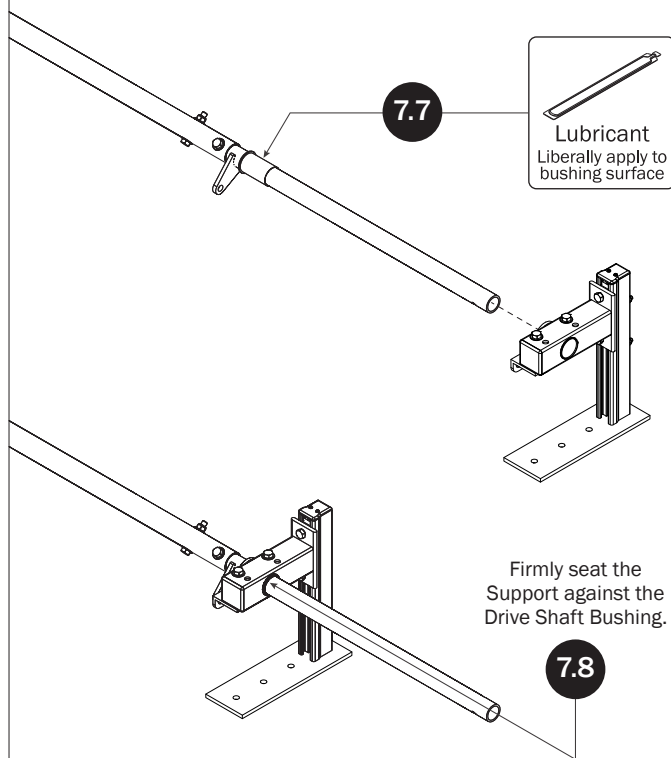
**7.1** This support is reversible to accommodate different Utility Body mounting positions. To reverse, follow Steps 7.1–7.6. To use as factory-assembled, start at Step 7.7



**7.5** Rotate the Rear Extension Support Foot 180° and reassemble using the Drive Shaft Support removed during Step 7.4, and the Nuts and Washers removed during Step 7.2. Do not tighten the Nuts until Step 7.6

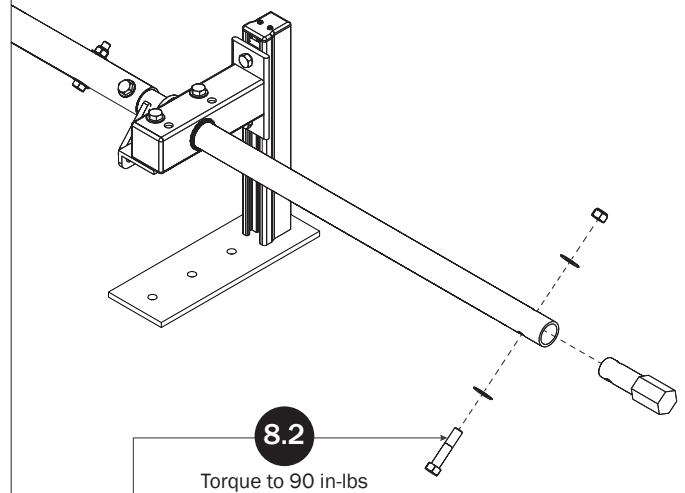


Note: This Support will be shown in its typical factory-assembled orientation for the remainder of this manual. Functionality and installation is the same for either orientation, and all included parts and hardware will be used, other than those discarded during Step 7.3.



**DRIVE SHAFT HEX STUD-1"**

**8.1** Insert the Drive Shaft Hex Stud into the open end of the Drive Shaft Extension. Align the bolt holes, then install the 3/8" x 1.75" Hex Stud Bolt (1X), 3/8" Washer (2X), and 3/8" Lock Nut (1X) in the order shown.



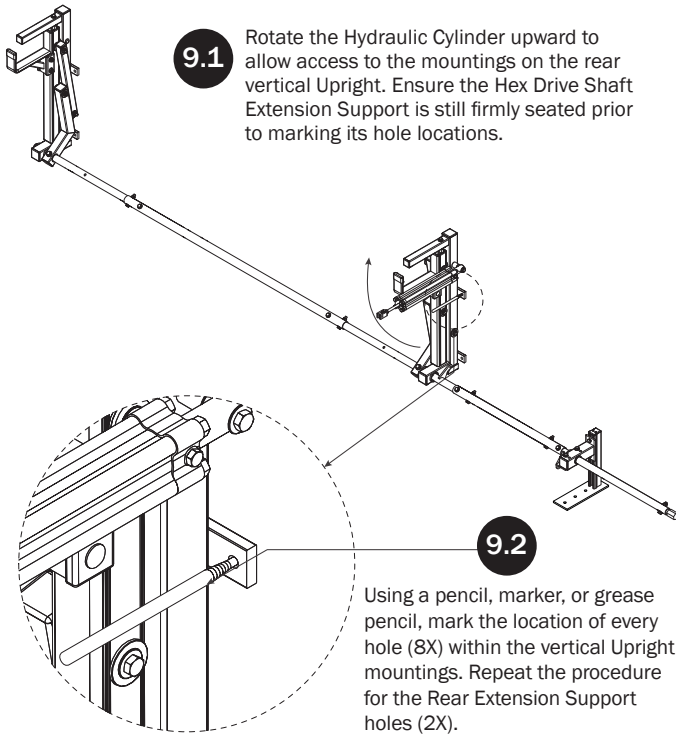
**3/8" Hardware**  
Tight fitting bolt.  
Use a ratchet and 3/16" socket to thread into Drive Shaft

**Anti-Seize**  
Must apply Anti-Seize Compound and torque to specified value.

## MOUNTING PREPARATION



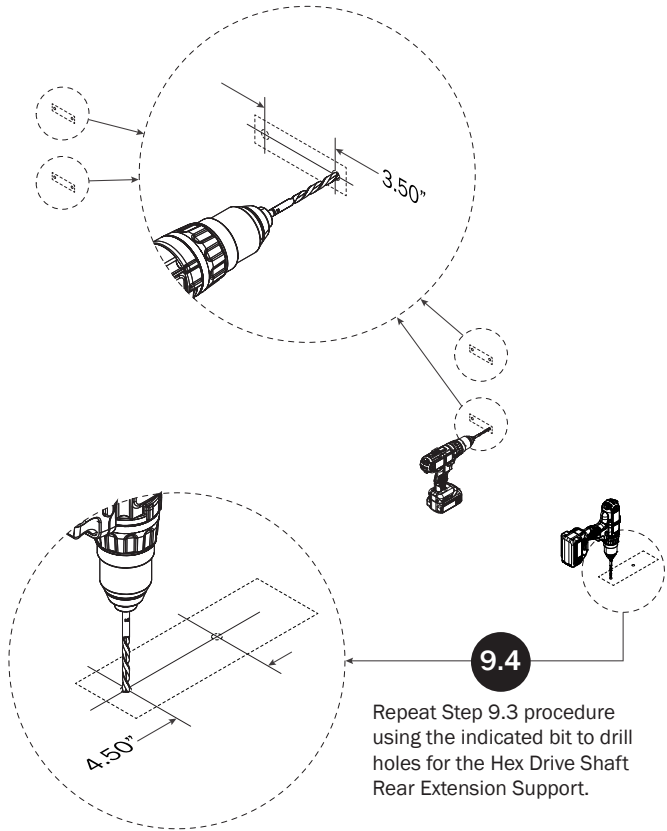
The assembled rack is approximately 130" in length making it difficult to properly lift and place on the utility body. To prevent bodily injury and/or vehicle damage, it is recommended to use two people to safely lift and place the rack onto the vehicle.



**9.1** Rotate the Hydraulic Cylinder upward to allow access to the mountings on the rear vertical Upright. Ensure the Hex Drive Shaft Extension Support is still firmly seated prior to marking its hole locations.

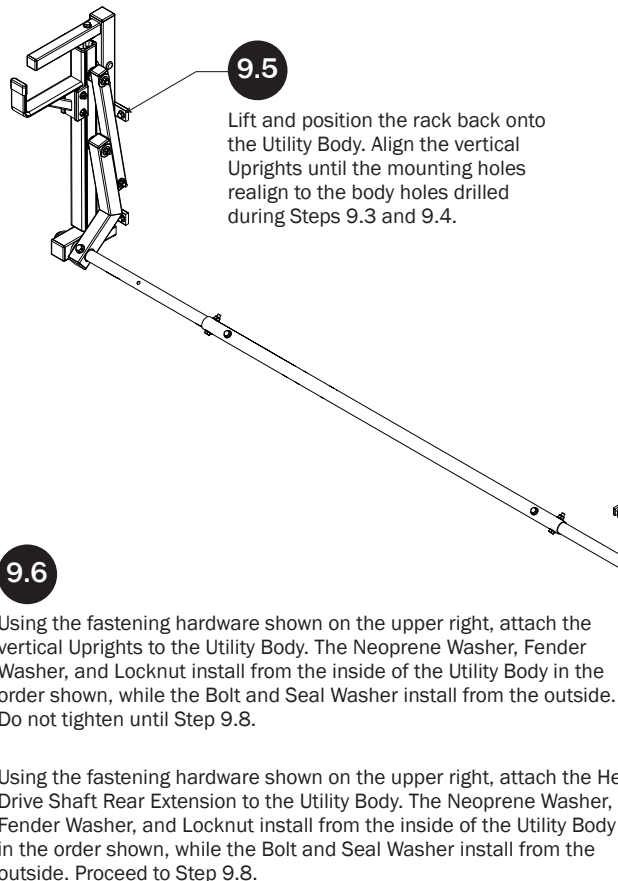
**9.2** Using a pencil, marker, or grease pencil, mark the location of every hole (8X) within the vertical Upright mountings. Repeat the procedure for the Rear Extension Support holes (2X).

**9.3** Remove the rack to expose the bolt hole markings. Using a 9MM, 23/64", or T size bit, drill holes into the Utility Body at the marked mounting bolt hole locations created during Step 9.2.



**9.4** Repeat Step 9.3 procedure using the indicated bit to drill holes for the Hex Drive Shaft Rear Extension Support.

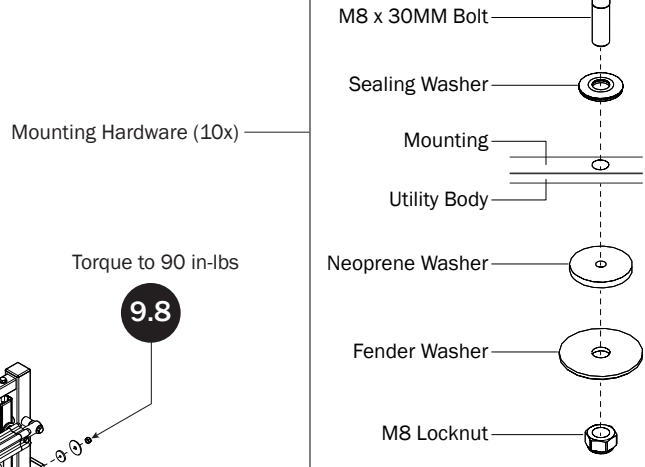
## UTILITY BODY MOUNTING



**9.5** Lift and position the rack back onto the Utility Body. Align the vertical Uprights until the mounting holes realign to the body holes drilled during Steps 9.3 and 9.4.

**9.6** Using the fastening hardware shown on the upper right, attach the vertical Uprights to the Utility Body. The Neoprene Washer, Fender Washer, and Locknut install from the inside of the Utility Body in the order shown, while the Bolt and Seal Washer install from the outside. Do not tighten until Step 9.8.

Using the fastening hardware shown on the upper right, attach the Hex Drive Shaft Rear Extension to the Utility Body. The Neoprene Washer, Fender Washer, and Locknut install from the inside of the Utility Body in the order shown, while the Bolt and Seal Washer install from the outside. Proceed to Step 9.8.



Mounting Hardware (10x)

Torque to 90 in-lbs

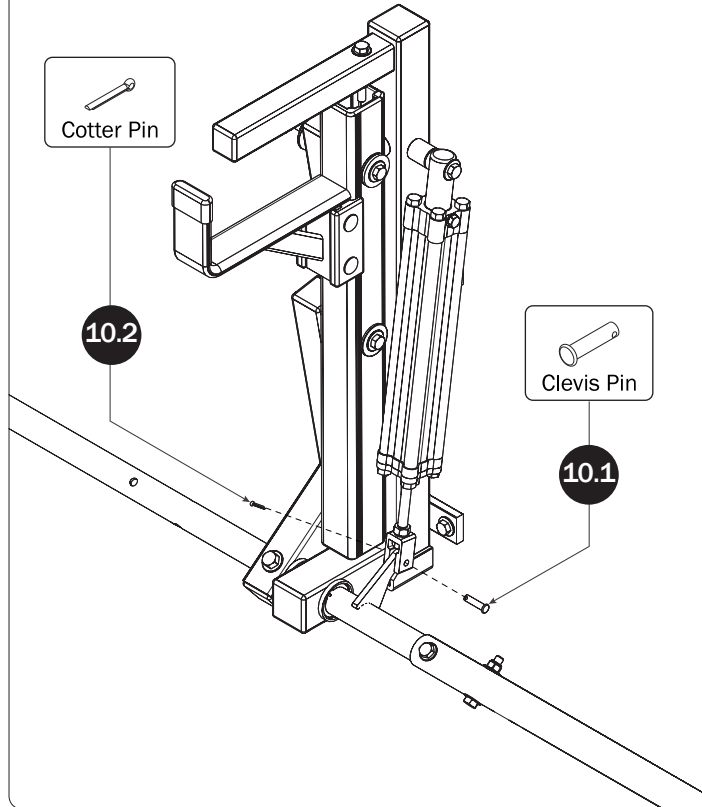
**9.8**



**Anti-Seize**  
Must apply Anti-Seize Compound and torque to specified value.

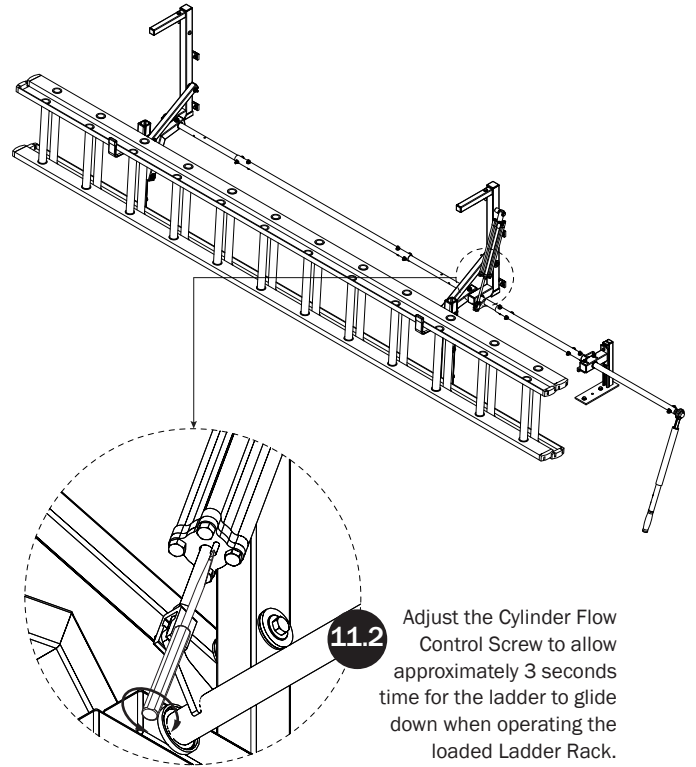
**9.7**

### CYLINDER HARDWARE

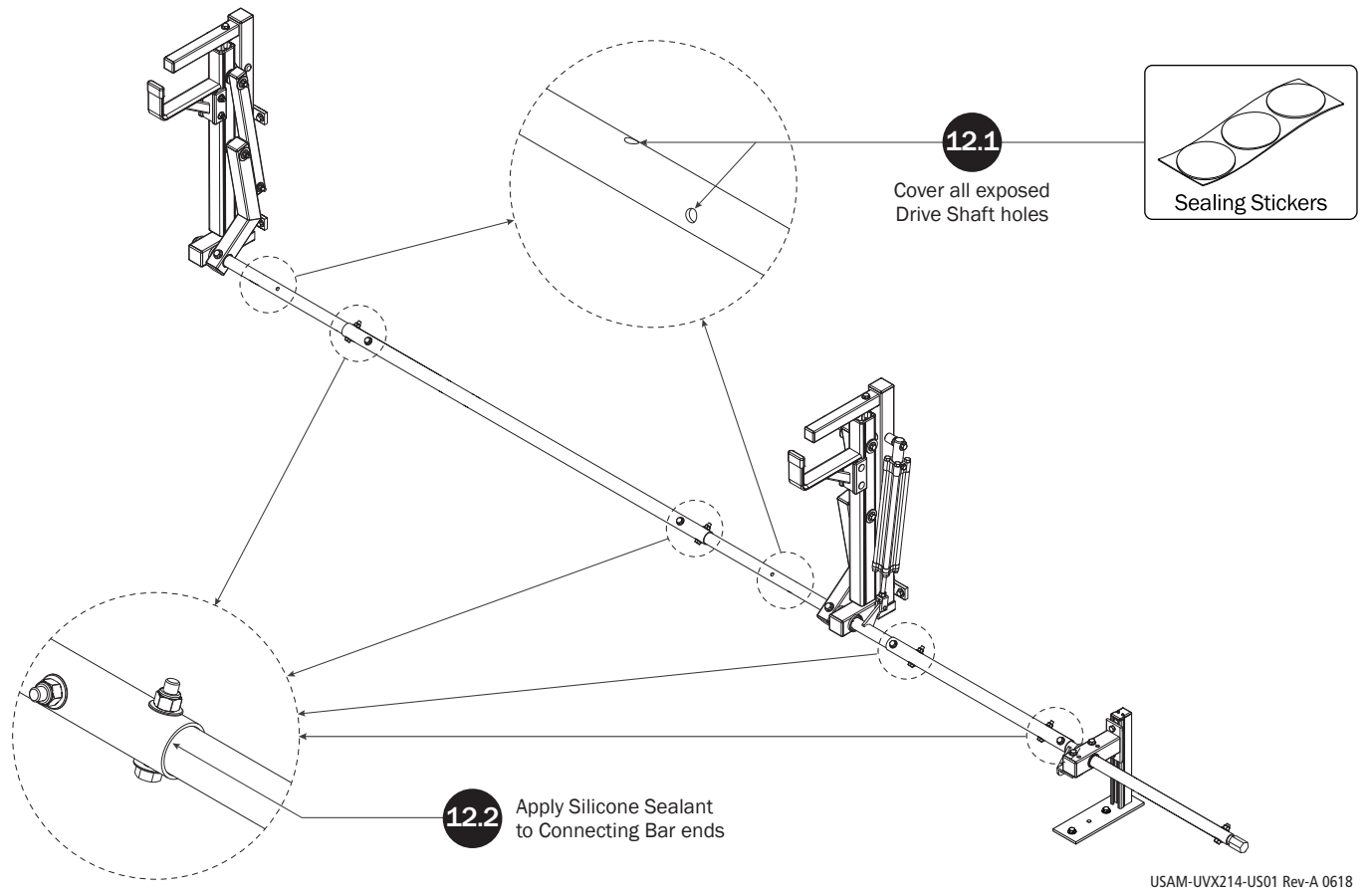


### CYLINDER ADJUSTMENT

**11.1** To properly adjust the Hydraulic Cylinder for load descent speed, position the intended-use ladder onto the vertical Z Post. Proceed to Step 11.2 and adjust accordingly.



### DRIVE SHAFT SEALING



USAM-UVX214-US01 Rev-A 0618