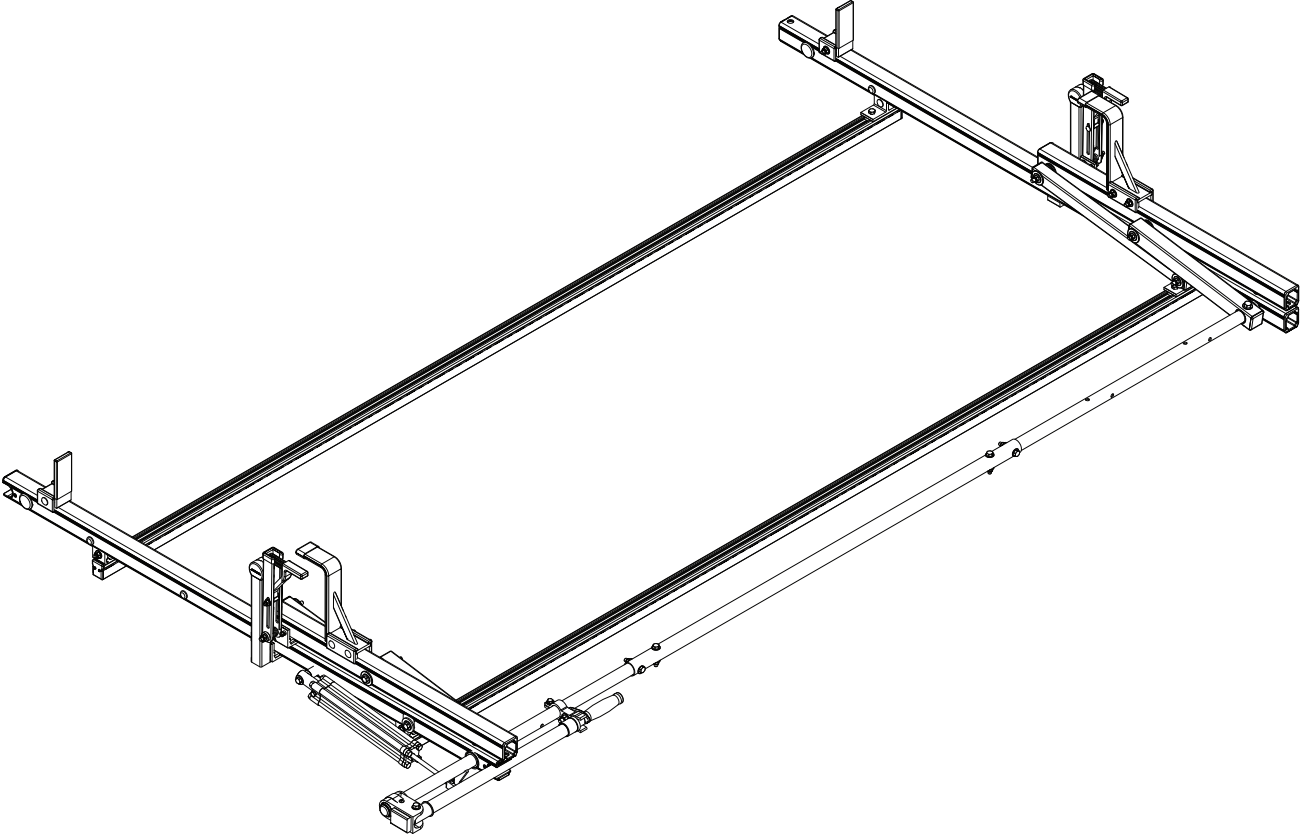


PRIME DESIGN™

A Safe Fleet Brand

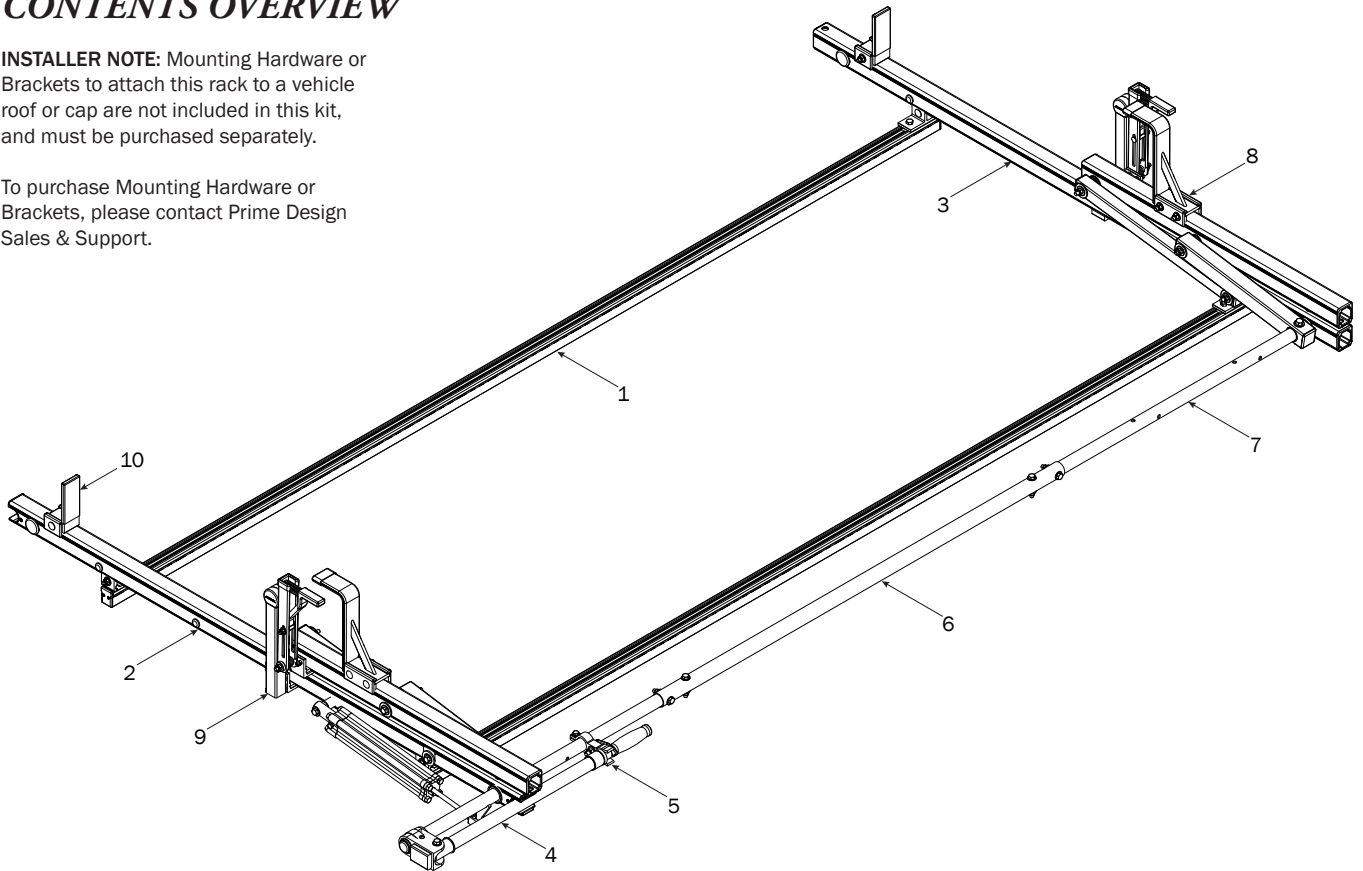


6001
PBR

CONTENTS OVERVIEW

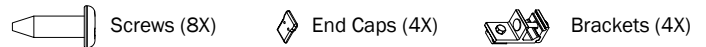
INSTALLER NOTE: Mounting Hardware or Brackets to attach this rack to a vehicle roof or cap are not included in this kit, and must be purchased separately.

To purchase Mounting Hardware or Brackets, please contact Prime Design Sales & Support.

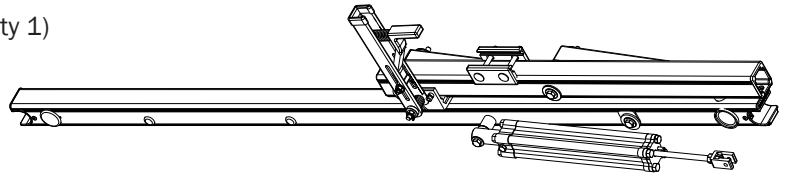


1—FBM-0002 (Qty 1)
Channels with hardware

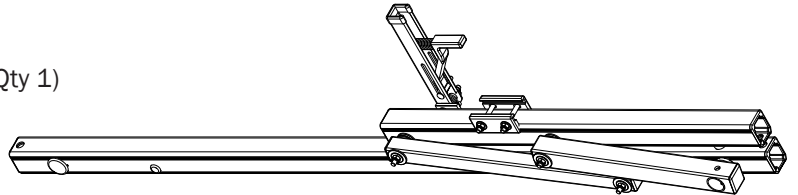
Channels (2X)



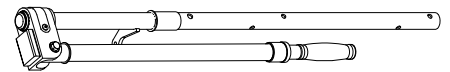
2—Rear Crossbar Assembly (Qty 1)



3—Front Crossbar Assembly (Qty 1)



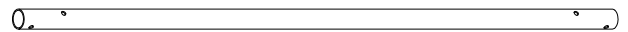
4—Rear Drive Shaft (Qty 1)
Right Hand, 34.00"



5—Handle Latch Assembly (Qty 1)
Right Hand



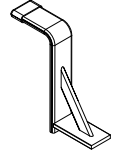
6—Connecting Bar (Qty 1)
48.00"



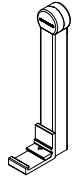
7—Front Drive Shaft (Qty 1)
 B Version, 35.75"



8—Z Post (Qty 2)
 Adjustable, 7.25"



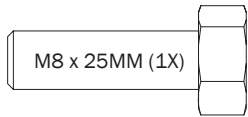
9—L Post..... (Qty 2)
 Roller Cap, 9.25"



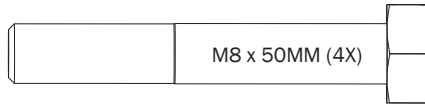
10—Ladder Stop Assembly (Qty 2)
 1.75"



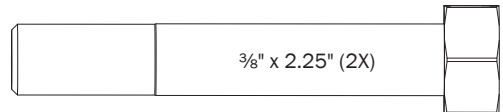
11—HKT-8163 (Not called out in Overview)..... (Qty 1)



M8 x 25MM (1X)



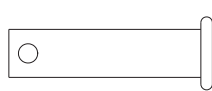
M8 x 50MM (4X)



3/8" x 2.25" (2X)



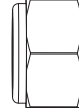
Cotter Pin (1X)



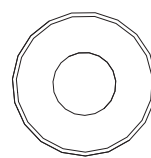
Clevis Pin (1X)



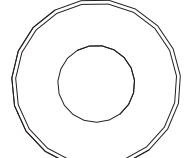
M8 Lock Nut (5X)



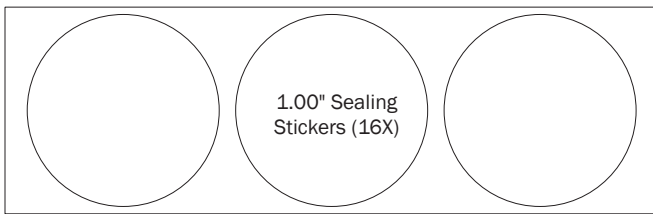
3/8" Lock Nut (2X)



5/16" Flat Washer (10X)



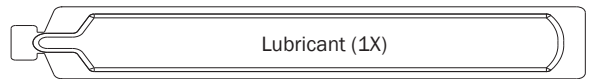
3/8" Flat Washer (4X)



1.00" Sealing Stickers (16X)

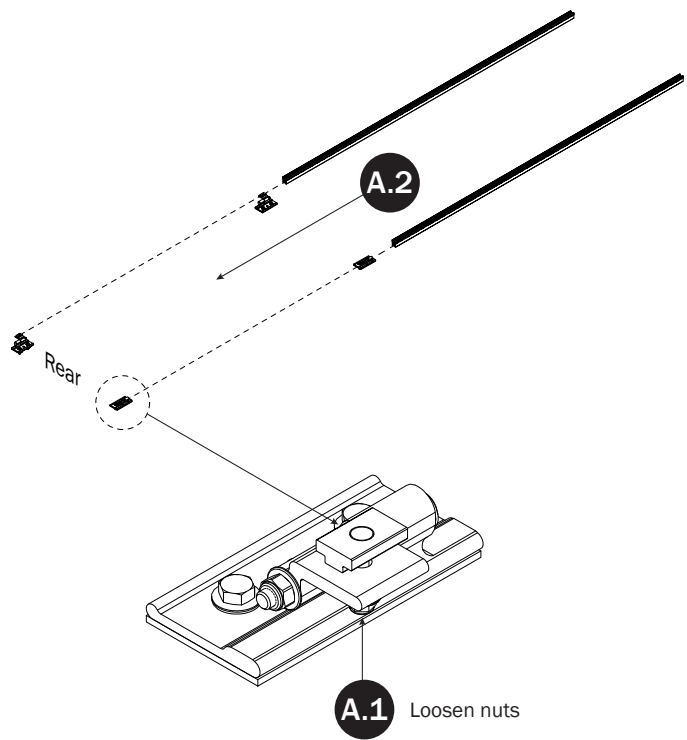


Anti-Seize (1X)

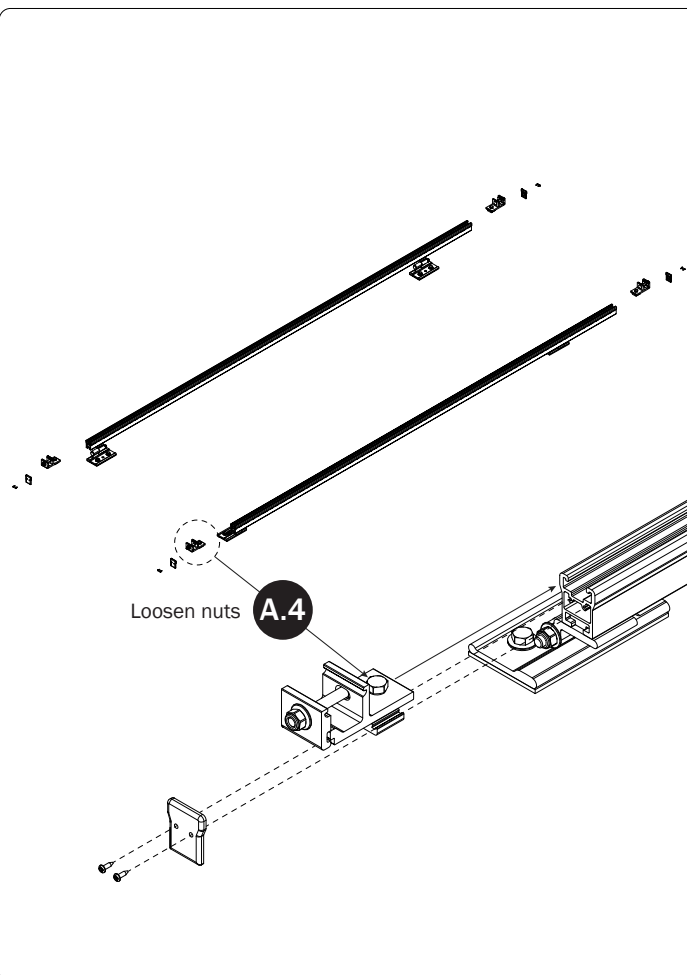
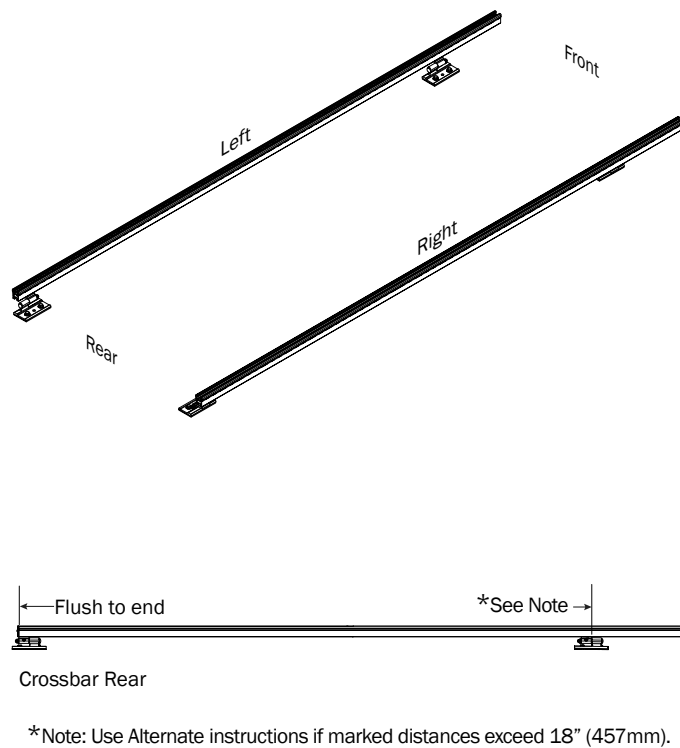


Lubricant (1X)

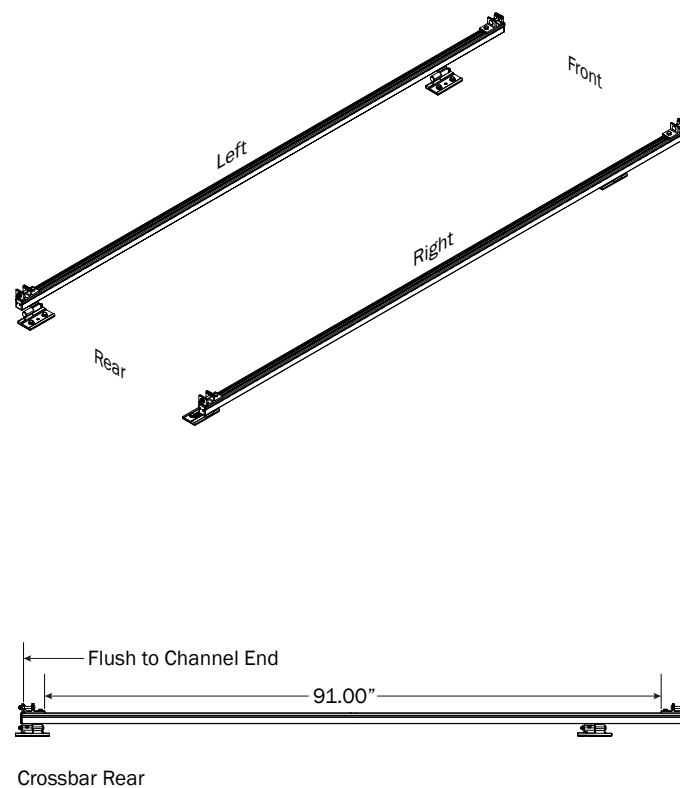
FBM-0002 FLUSH CHANNELS TO PRE-INSTALLED MOUNTING BRACKETS



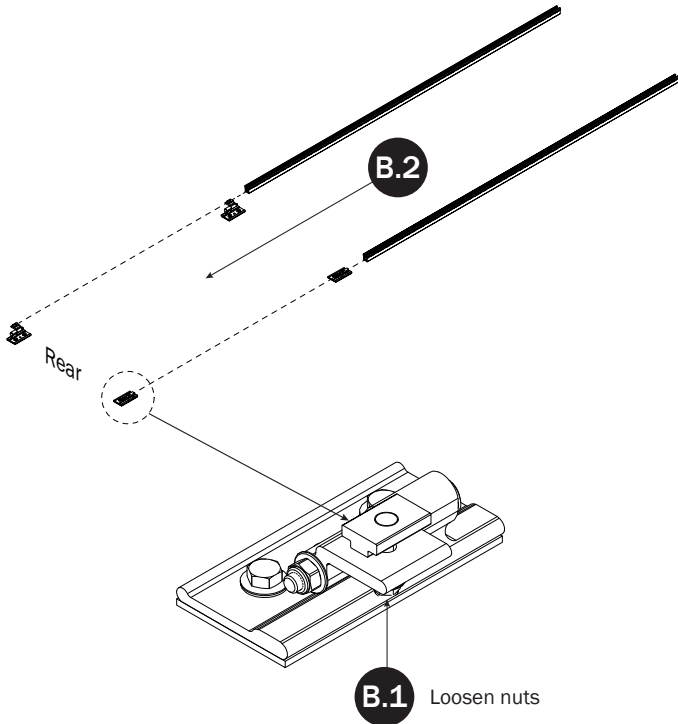
A.3 Set to distances then torque nuts to 80 in-lbs



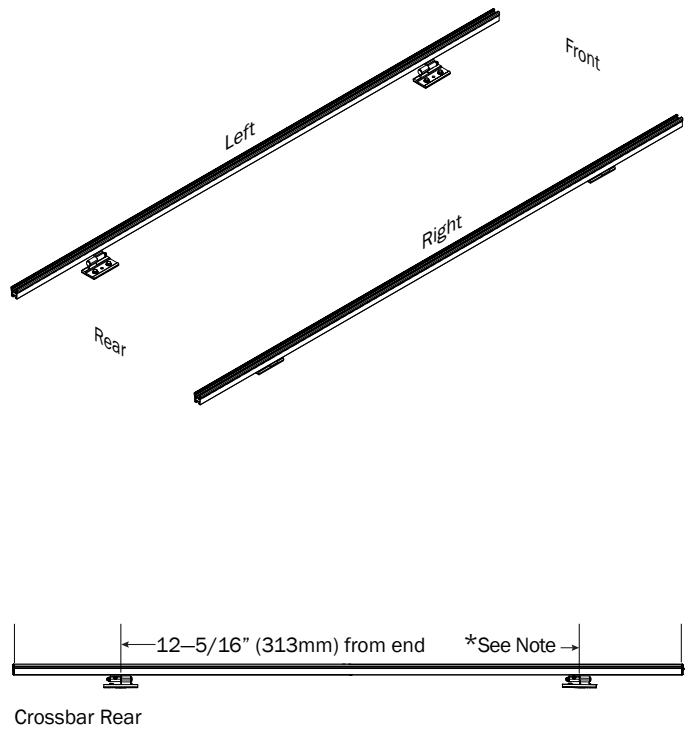
A.5 Set to distances then torque Rear Bracket nuts to 90 in-lbs



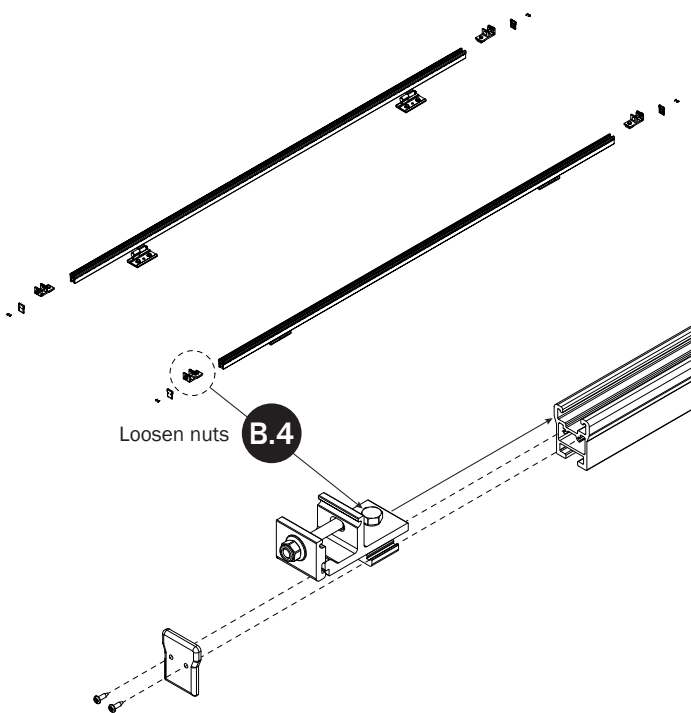
FBM-0002 ALTERNATE
CHANNELS TO PRE-INSTALLED
MOUNTING BRACKETS



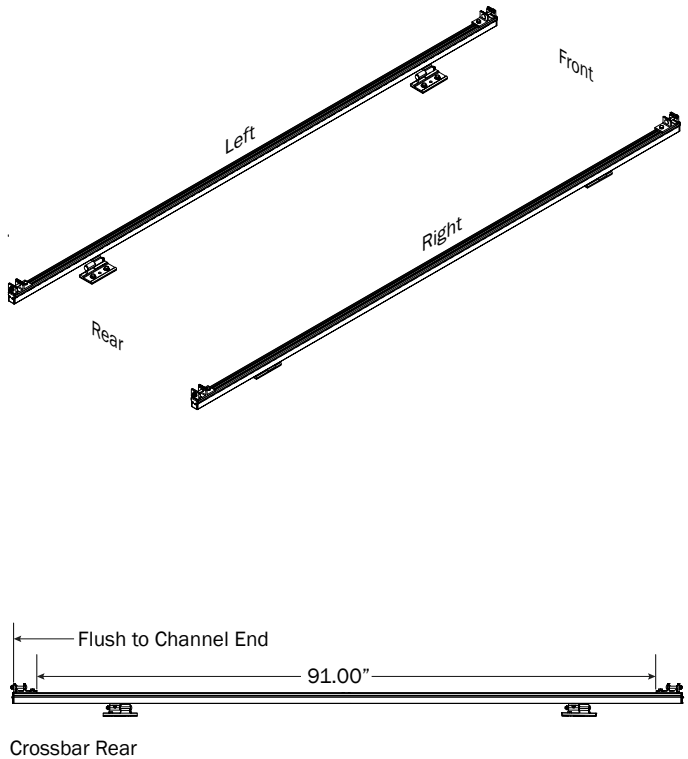
B.3 Set to distances then torque nuts to 80 in-lbs



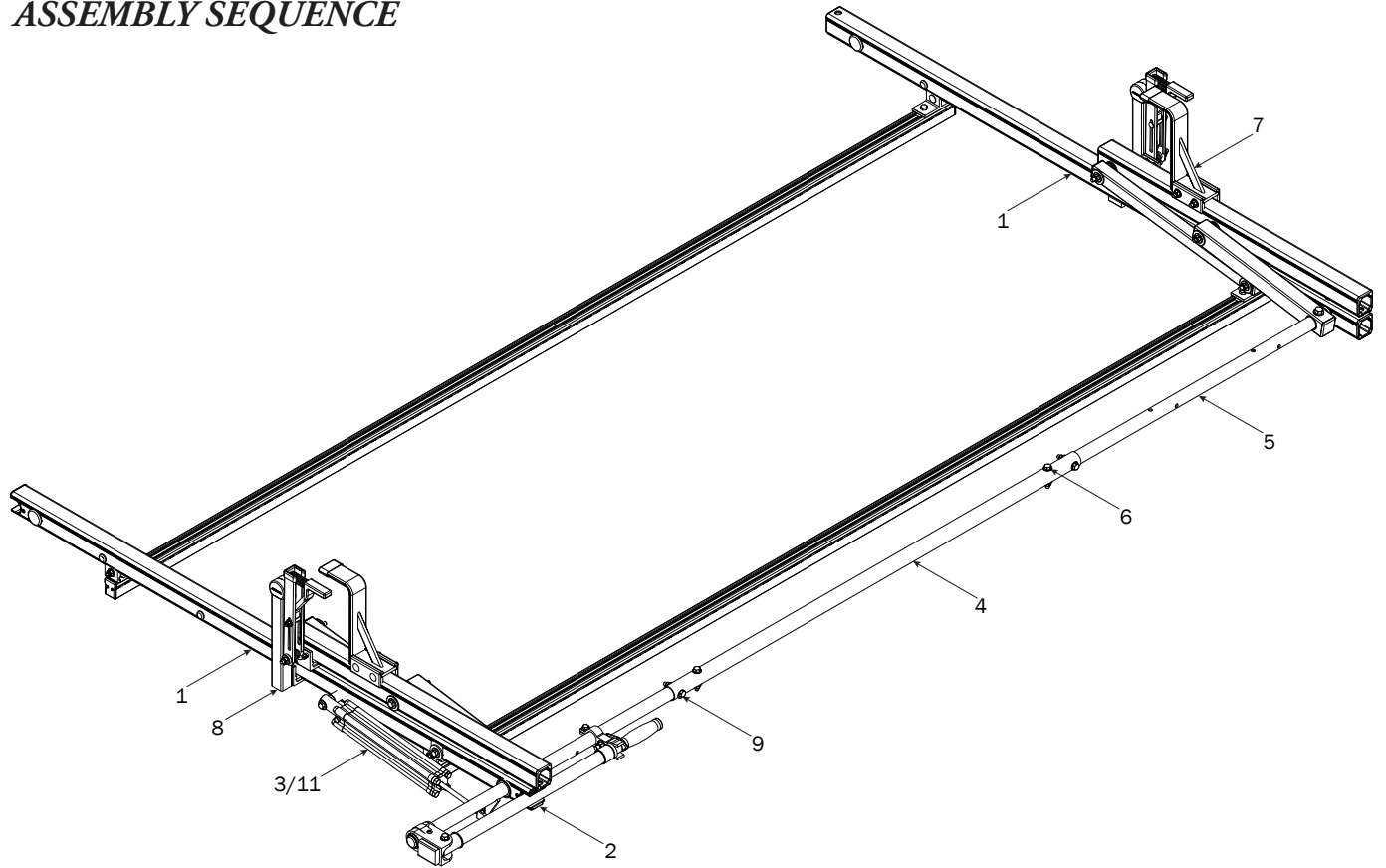
*Note: Move Channels rearward if marked front distance exceeds 18" (457mm).



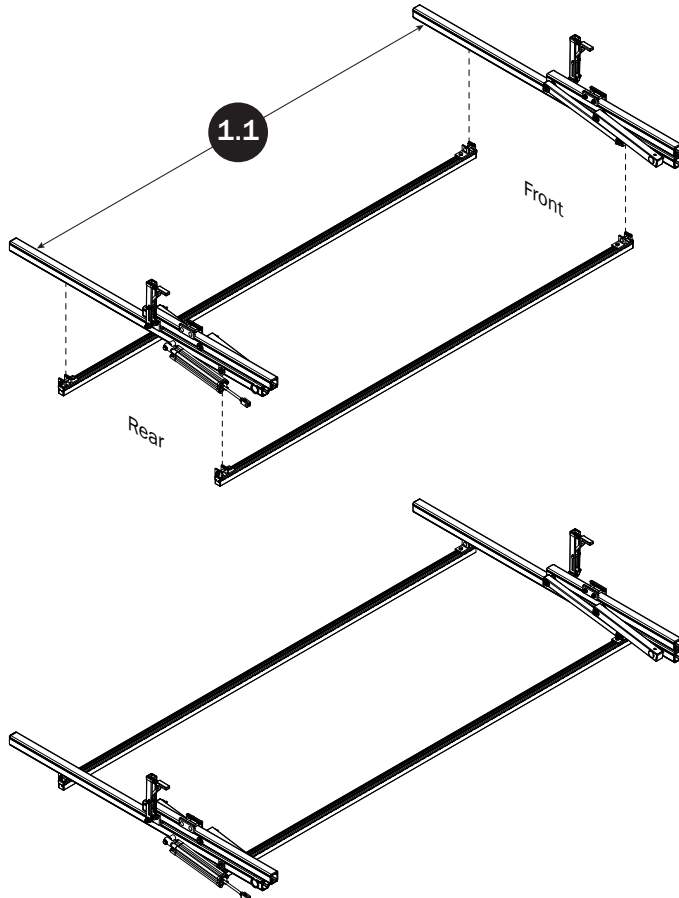
B.5 Set to distances then torque Rear Bracket nuts to 90 in-lbs



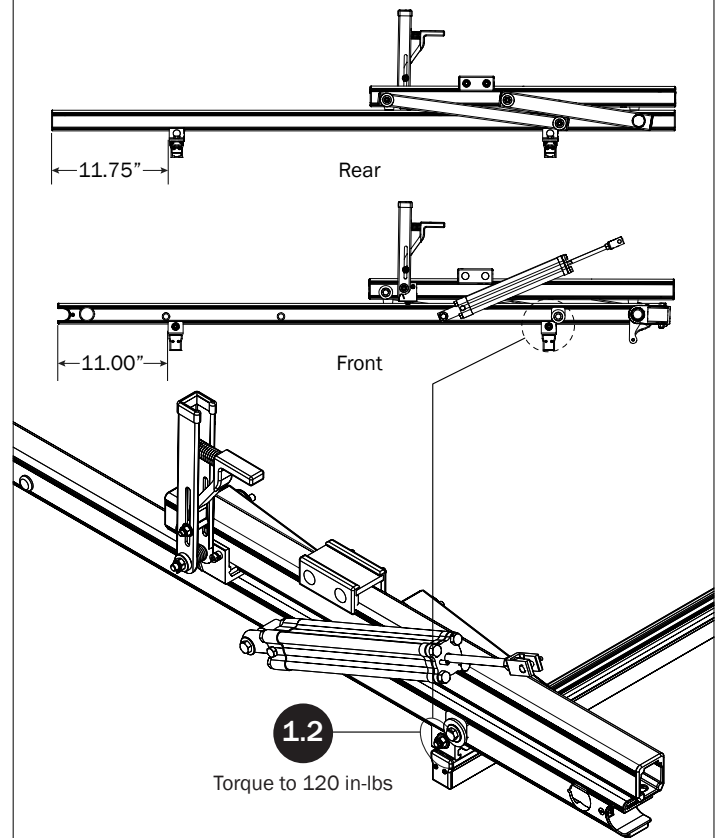
**RIGHT ROTATION
ASSEMBLY SEQUENCE**



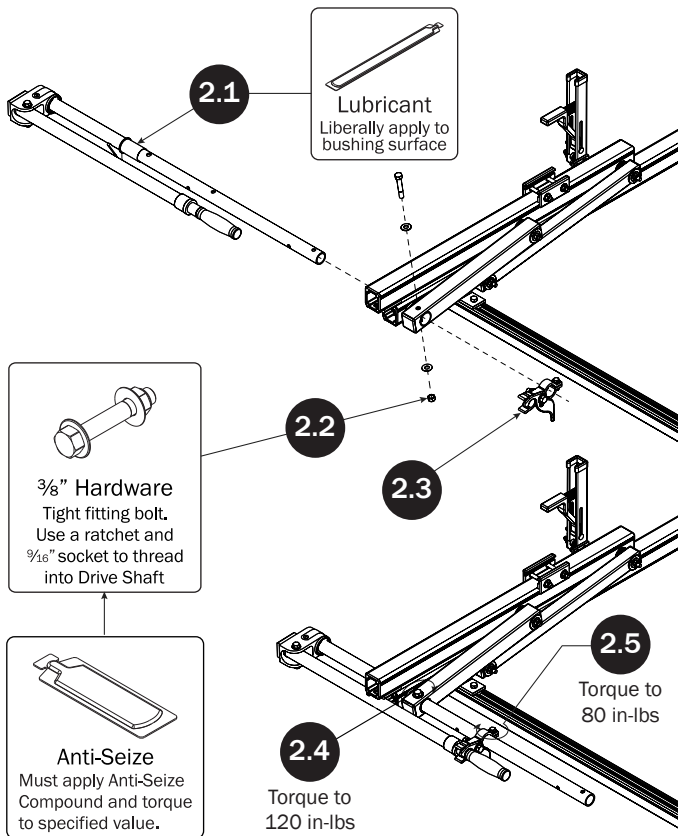
CROSSBARS



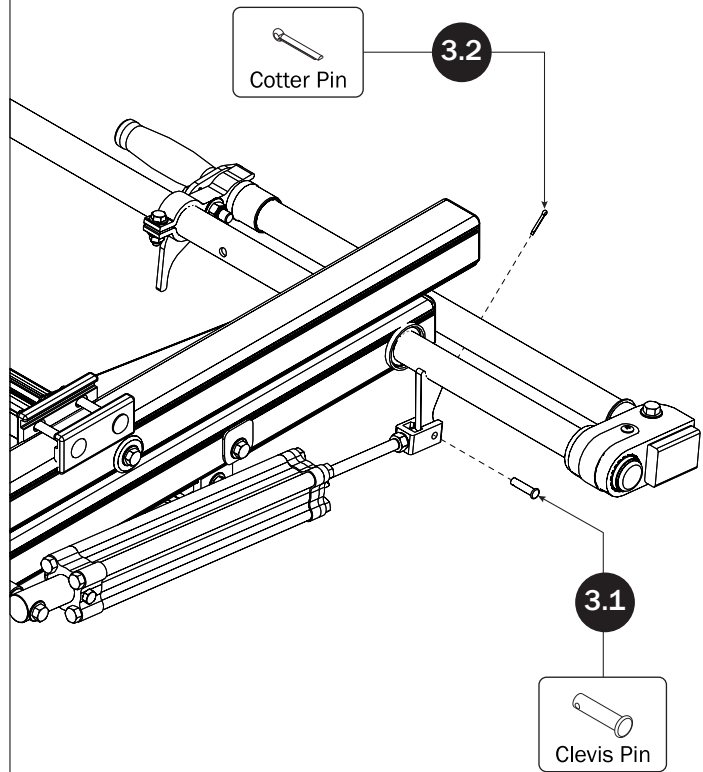
CROSSBAR ADJUSTMENT



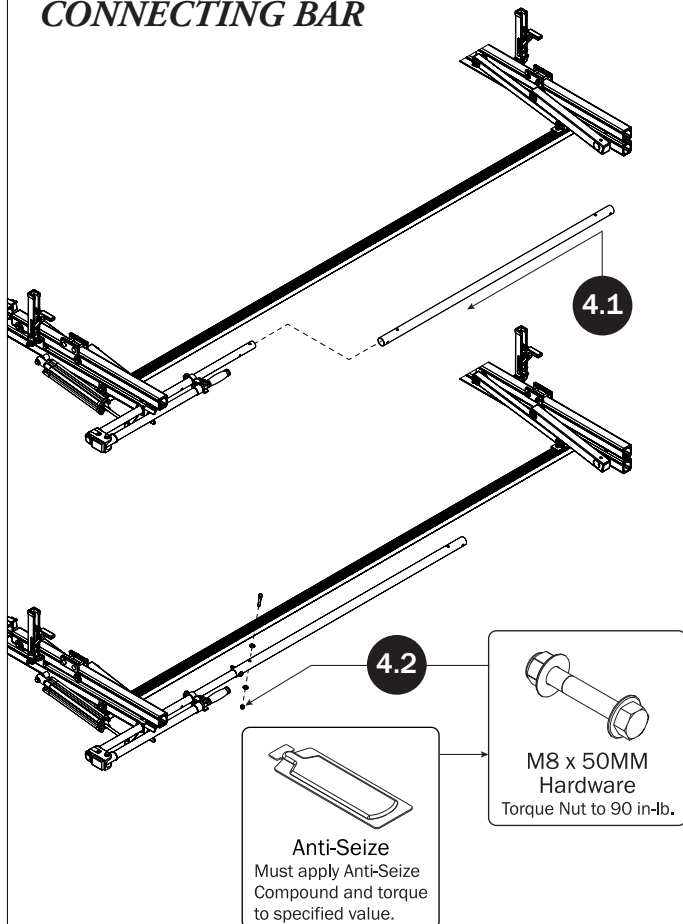
REAR DRIVE SHAFT



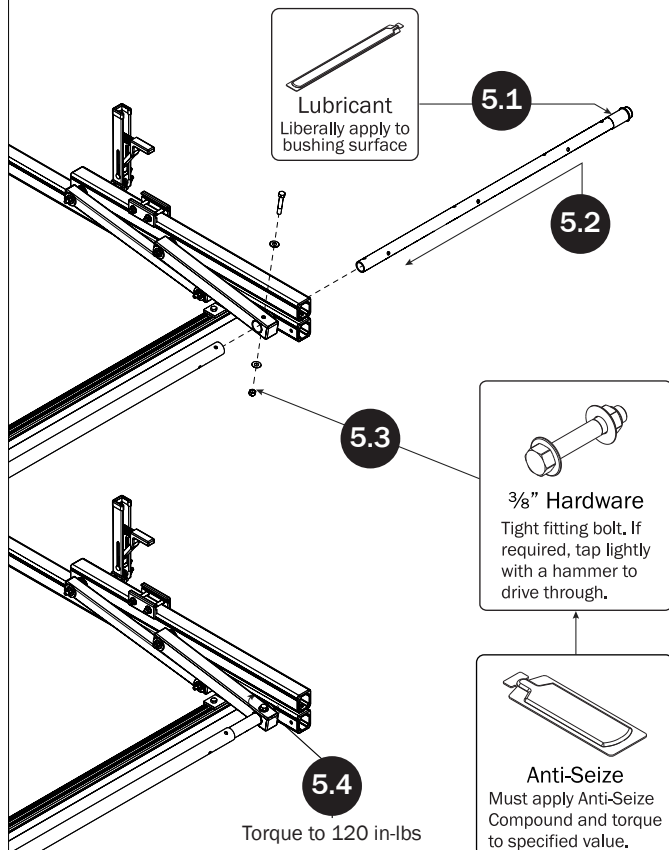
CYLINDER HARDWARE



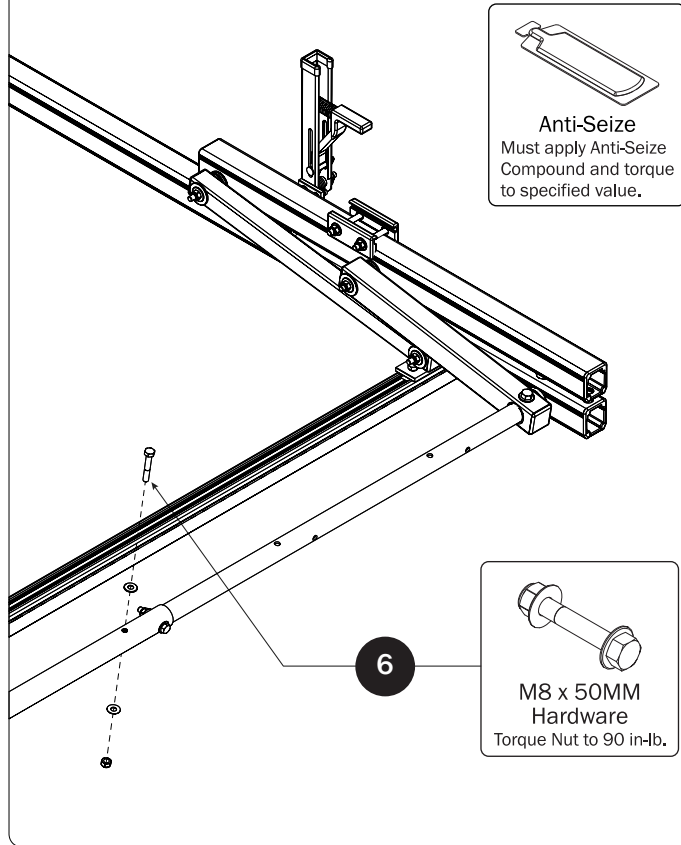
CONNECTING BAR



FRONT DRIVE SHAFT

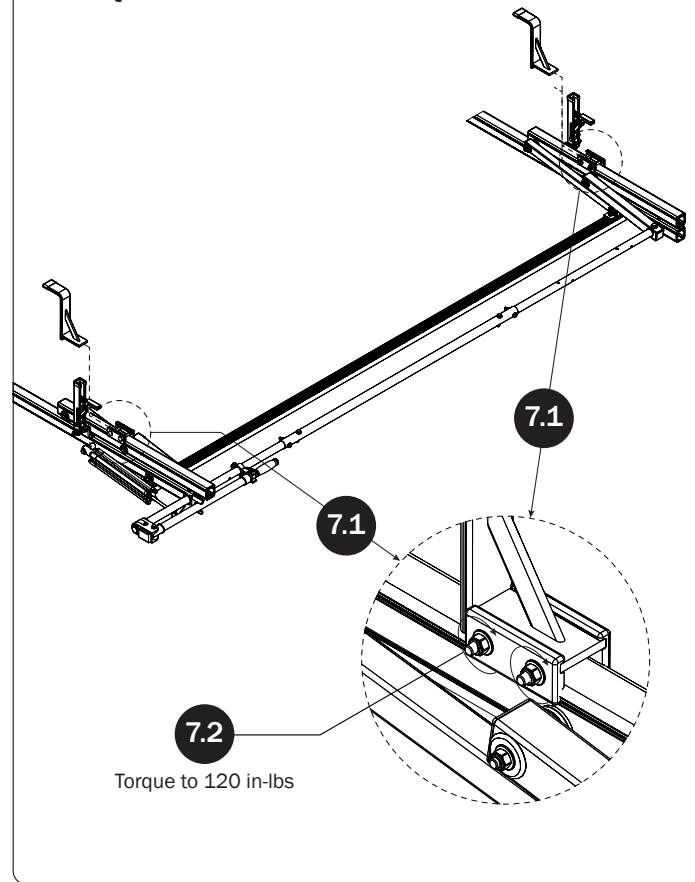


CONNECTING BAR FASTENERS



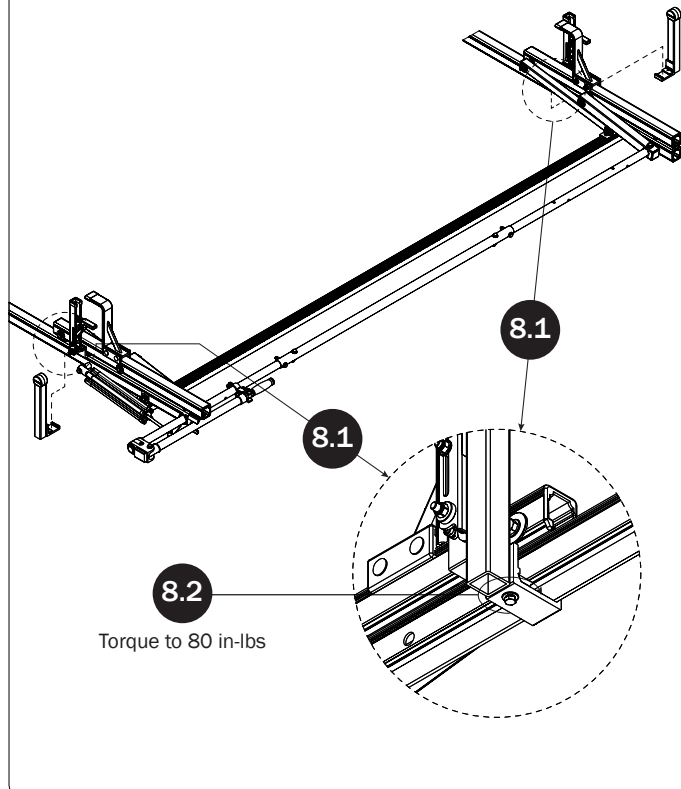
Z POSTS

SEE QUICK START GUIDE FOR ADJUSTMENTS

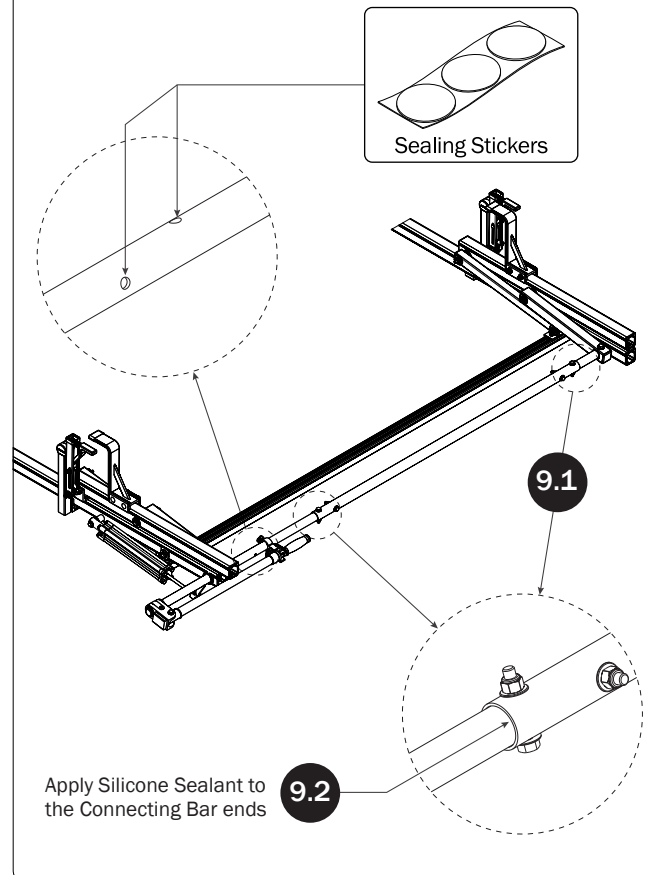


L POSTS

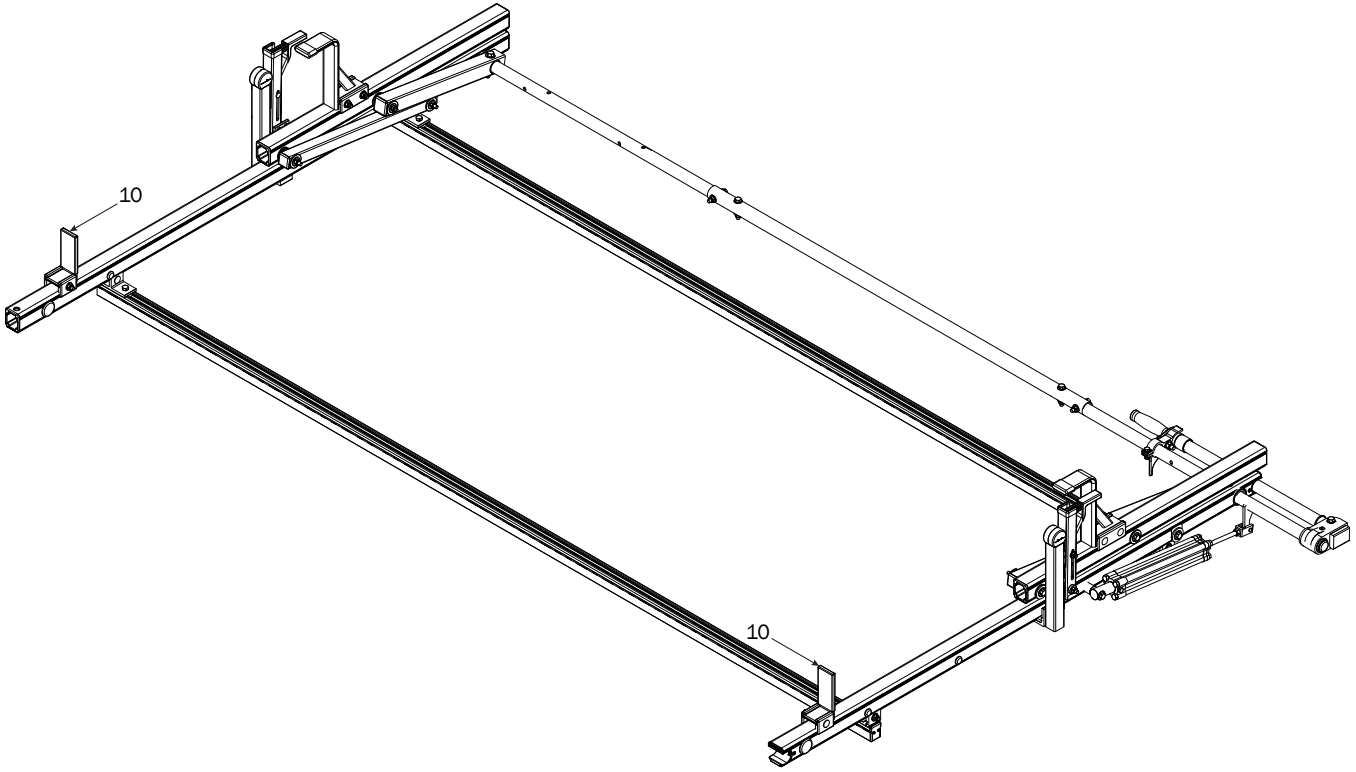
SEE QUICK START GUIDE FOR ADJUSTMENTS



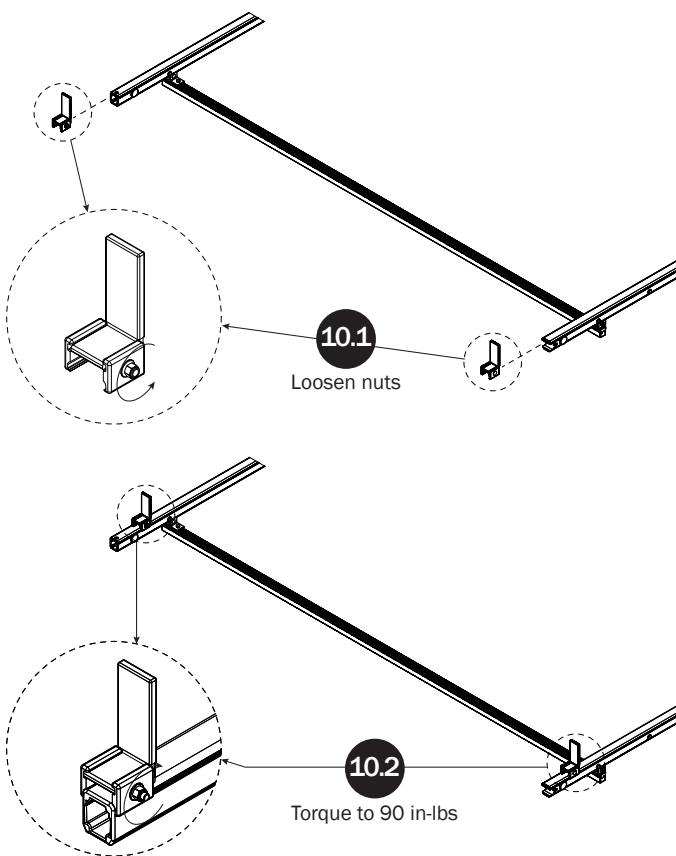
DRIVE SHAFT SEALING



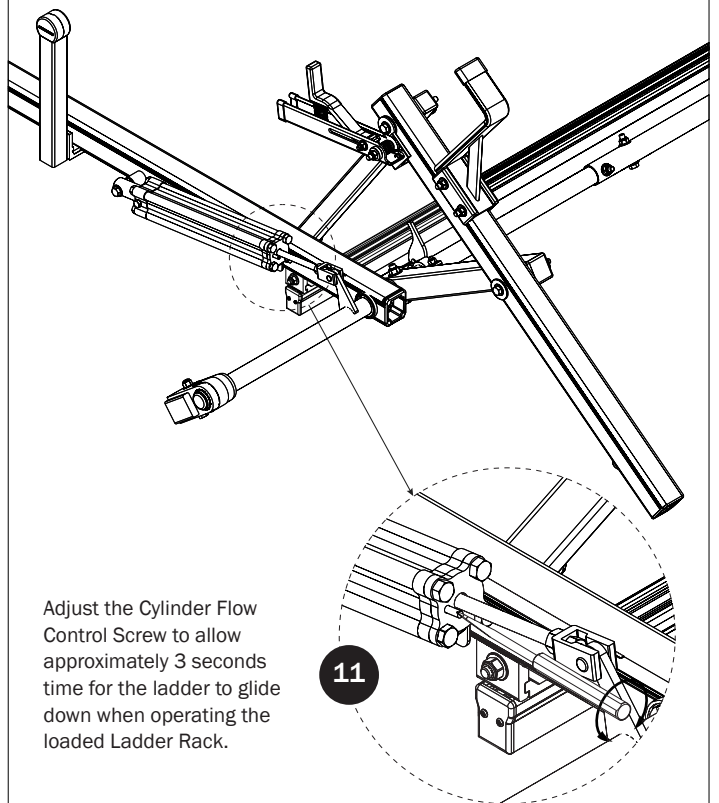
**LEFT SIDE BASE
ASSEMBLY SEQUENCE**



LADDER STOPS



CYLINDER ADJUSTMENT



Adjust the Cylinder Flow Control Screw to allow approximately 3 seconds time for the ladder to glide down when operating the loaded Ladder Rack.

Page Intentionally Left Blank

Page Intentionally Left Blank

